

# - YEARLING ANGUS BULLS -

**LOT 1**  
**MED ROCK**

## MED ROCK BEAVER MASS 325

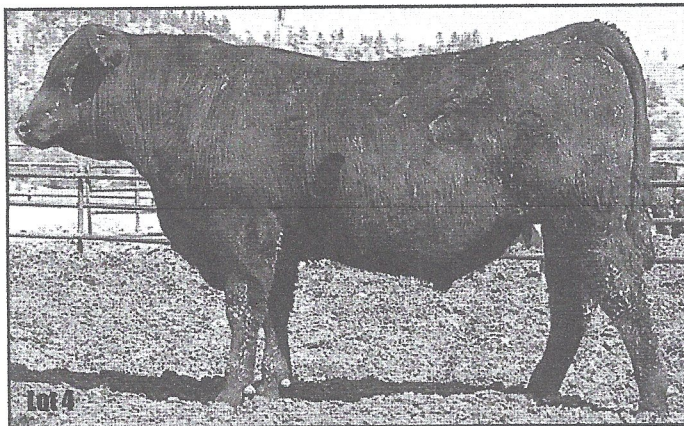
Bull - Born 3/23/23 Tag 069 Reg. #20923662

B BAR BLACK MASS 3045  
B BAR BLACK MASS 4907  
B BAR LADY JEWEL 490

MED ROCK BEAVER CREEK 628  
MED ROCK GOLDY BEAVER 069  
MED ROCK GOLDY COMMAND 776

EPDS		
	SIRE	DAM
BW	-1.3	-0.6
WW	+62	+54
MILK	+30	+22
YW	+104	+95
DAM PDN		
BW	2/72	
WEAN	1/96	

GED EPD	WT	BIRTH EPD	WEANING EPD	YEARLING EPD	MILK EPD	\$M	\$W	SC CM
+9	78	+1.0	627	+58	1031	+100	+26	79 56 36.0



**LOT 2**  
**MED ROCK**

## MED ROCK BLACK POWER 327

Bull - Born 4/01/23 Tag 679 Reg. #20924065

B BAR BLACK MASS 3045  
B BAR BLACK MASS 4907  
B BAR LADY JEWEL 490

PA POWER TOOL 9108  
MED ROCK POWER SAGE 679  
MED ROCK SAGE DB 679

EPDS		
	SIRE	DAM
BW	-1.3	-0.6
WW	+62	+38
MILK	+30	+27
YW	+104	+87
DAM PDN		
BW	2/86	
WEAN	2/102	

GED EPD	WT	BIRTH EPD	WEANING EPD	YEARLING EPD	MILK EPD	\$M	\$W	SC CM
+8	82	+1.1	679	+58	1091	+103	+26	76 53 37.0

**LOT 4**  
**MED ROCK**

## MED ROCK BLACK CREEK 352

Bull - Born 3/18/23 Tag 0027 Reg. #20908003

B BAR BLACK MASS 3045  
B BAR BLACK MASS 4907  
B BAR LADY JEWEL 490

MED ROCK BEAVER CREEK 628  
MED ROCK ULA CREEK 0027  
MED ROCK ULA 407

EPDS		
	SIRE	DAM
BW	-1.3	+1.4
WW	+62	+60
MILK	+30	+24
YW	+104	+104
DAM PDN		
BW	2/78	
WEAN	1/112	

GED EPD	WT	BIRTH EPD	WEANING EPD	YEARLING EPD	MILK EPD	\$M	\$W	SC CM
+7	84	+0.1	729	+61	1151	+105	+27	83 63 35.0

**LOT 3**  
**MED ROCK**

## MED ROCK BLACK COMRADE 353

Bull - Born 3/21/23 Tag 716 Reg. #20908004

B BAR BLACK MASS 3045  
B BAR BLACK MASS 4907  
B BAR LADY JEWEL 490

CONNELLY COMRADE 1385  
MED ROCK SASSY COM 716  
MED ROCK SASSY BB823

EPDS		
	SIRE	DAM
BW	-1.3	-1.5
WW	+62	+36
MILK	+30	+29
YW	+104	+66
DAM PDN		
BW	3/79	
WEAN	3/102	

GED EPD	WT	BIRTH EPD	WEANING EPD	YEARLING EPD	MILK EPD	\$M	\$W	SC CM
+10	90	+1.4	677	+49	1103	+86	+29	92 56 38.0

**LOT 5**  
**MED ROCK**

## MED ROCK PROFICIENT MASS 324

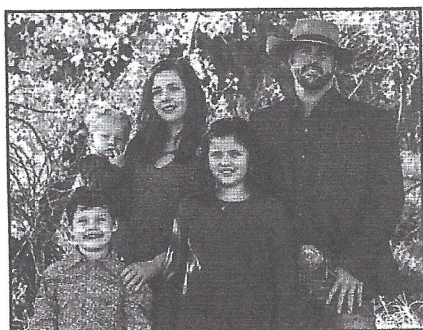
Bull - Born 3/26/23 Tag 326 Reg. #20907983

B BAR BLACK MASS 3045  
B BAR BLACK MASS 4907  
B BAR LADY JEWEL 490

ROCK'N D PROFICIENT 2915  
MED ROCK PROFICIENT BIRD 326  
MED ROCK BIRDIE 1020

EPDS		
	SIRE	DAM
BW	-1.3	+2.2
WW	+62	+53
MILK	+30	+29
YW	+104	+96
DAM PDN		
BW	6/92	
WEAN	6/104	

GED EPD	WT	BIRTH EPD	WEANING EPD	YEARLING EPD	MILK EPD	\$M	\$W	SC CM
+4	88	+0.5	705	+58	979	+101	+29	75 65 34.0



*Hello everyone!*

*First of all, thank you for your interest in our program.*

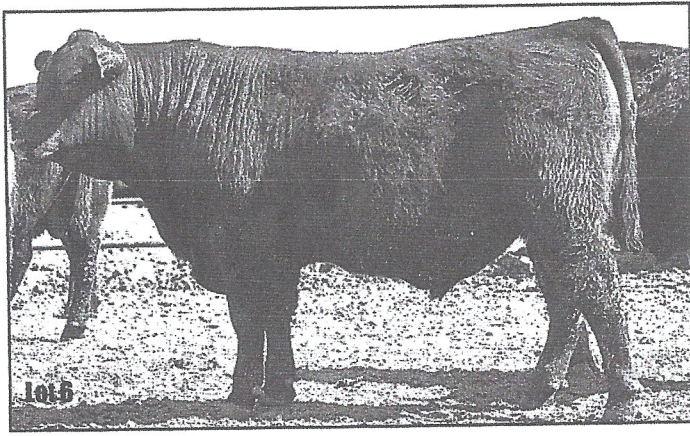
*We believe the cow is key. You cannot develop the "perfect" bull if you are not initially impressed by the cow. Our ideal cows are the ones that calve on their own, breed back timely each year, and perform well in our environment on limited, to no extra inputs while bringing in a big healthy calf each fall. We ask our cows to graze 10+ months of the year whenever possible. The Cows need to be out working to find the best forage available and stay in good flesh. Of course the cow needs to meet our physical standards (moderate frame size, feminine head, expansive rib, adequate hip). She also needs to exhibit great maternal instincts the moment the calf hits the ground, yet be docile enough to let us tag and weigh her calf. With the built-in convenience traits (udder quality, fleshing ability, structural correctness, sound feet) of our herd and the proven females behind the sires we chose to use, we believe you can find confidence in our bulls.*

*Our bulls are fed enough to get a test of feedlot performance, but we absolutely will not push them to the point of harming their long-term structural development. The bulls have been in a pasture, have had plenty of exercise, and are ready to cover cows while remaining in decent flesh. We acknowledge fat bulls sell and we could probably make more money by pushing our bulls, but we refuse to hinder the long-term value of many years of breeding service. This year the bulls were developed*

*at Rounds Angus in South Dakota. Rounds do a great job of developing the bulls with a ration of free choice hay, Bull grower Canola, and Purina Ultimate Breeder 8 mineral. We believe customer satisfaction is paramount to our success! We strive for the type of cattle that will last, but in the case that one does not, we want to make it right. If you ever have a problem with one of our bulls let us know ASAP so we can make it right.*

*We would like to give a big heartfelt thank you to our friends, family, and neighbors for their help throughout the year and their support of our program. We couldn't do this without you!*

Kelly, Torey, Oakley, Calgary, and Rogue Spring



**MED ROCK** **LOT 9** **MED ROCK BLACK POWER MAS 334**  
 Bull - Born 3/20/23 Tag 535 Reg. #20907989

B BAR BLACK MASS 3045  
**B BAR BLACK MASS 4907**  
 B BAR LADY JEWEL 490

EPDS		
	SIRE	DAM
BW	-1.3	+0.6
WW	+62	+60
MILK	+30	+33
YW	+104	+99
DAM PDM		
BW	6/76	
WEAN	6/104	

PA POWER TOOL 9108  
**MED ROCK SA MISS POWER 535**  
 MED ROCK SA CAL 807

GED EPD	WT	BIRTH EPD	WEANING EPD	205	365	YEARLING EPD	MILK EPD	SM	SW	SC CM
1+8	82	1-0.4	712	1+61	1095	1+102	1+31	86	69	38.0

**MED ROCK** **LOT 6** **MED ROCK MLM BLACK MASS 371**  
 Bull - Born 3/25/23 Tag M029 Reg. #20908016

B BAR BLACK MASS 3045  
**B BAR BLACK MASS 4907**  
 B BAR LADY JEWEL 490

EPDS		
	SIRE	DAM
BW	-1.3	+4.1
WW	+62	+79
MILK	+30	+31
YW	+104	+124
DAM PDM		
BW	1/86	
WEAN	1/121	

MCD 3545 861  
**MED ROCK UNO ROSE MLM 029**  
 MED ROCK ROSIE CASH MLM 804

GED EPD	WT	BIRTH EPD	WEANING EPD	205	365	YEARLING EPD	MILK EPD	SM	SW	SC CM
1+3	86	1+1.4	786	1+71	1197	1+115	1+30	93	74	33.0

**MED ROCK** **LOT 10** **MED ROCK HULA MASS 337**  
 Bull - Born 4/03/23 Tag 043 Reg. #20907992

B BAR BLACK MASS 3045  
**B BAR BLACK MASS 4907**  
 B BAR LADY JEWEL 490

EPDS		
	SIRE	DAM
BW	-1.3	+2.4
WW	+62	+61
MILK	+30	+24
YW	+104	+107
DAM PDM		
BW	2/78	
WEAN	1/95	

KPHU 4055  
**MED ROCK LUCI HULA 043**  
 MED ROCK LUCI FACTOR 072

GED EPD	WT	BIRTH EPD	WEANING EPD	205	365	YEARLING EPD	MILK EPD	SM	SW	SC CM
1+7	78	1+0.6	634	1+62	1056	1+106	1+27	79	55	37.0

**MED ROCK** **LOT 7** **MED ROCK MASS PERFORMER 373**  
 Bull - Born 3/20/23 Tag 960 Reg. #20920851

B BAR BLACK MASS 3045  
**B BAR BLACK MASS 4907**  
 B BAR LADY JEWEL 490

EPDS		
	SIRE	DAM
BW	-1.3	+0.5
WW	+62	+51
MILK	+30	+27
YW	+104	+95
DAM PDM		
BW	1/80	
WEAN	1/102	

FISCHER PERFORMER 739  
**MED ROCK BECKI PERFORMER 960**  
 MED ROCK BECKI POWER 775

GED EPD	WT	BIRTH EPD	WEANING EPD	205	365	YEARLING EPD	MILK EPD	SM	SW	SC CM
1+9	80	-1.3	635	1+61	1142	1+110	1+21	77	56	43.5

**MED ROCK** **LOT 11** **MED ROCK BLACK HULA MASS 341**  
 Bull - Born 3/30/23 Tag 051 Reg. #20907996

B BAR BLACK MASS 3045  
**B BAR BLACK MASS 4907**  
 B BAR LADY JEWEL 490

EPDS		
	SIRE	DAM
BW	-1.3	+2.6
WW	+62	+58
MILK	+30	+27
YW	+104	+106
DAM PDM		
BW	2/79	
WEAN	1/104	

KPHU 4055  
**MED ROCK JANA HULA 051**  
 MED ROCK JANA 2915 3018

GED EPD	WT	BIRTH EPD	WEANING EPD	205	365	YEARLING EPD	MILK EPD	SM	SW	SC CM
1+5	83	1+0.7	682	1+60	1091	1+106	1+28	78	58	35.0

**MED ROCK** **LOT 8** **MED ROCK UNO MASS 376**  
 Bull - Born 3/18/23 Tag 057 Reg. #20908019

B BAR BLACK MASS 3045  
**B BAR BLACK MASS 4907**  
 B BAR LADY JEWEL 490

EPDS		
	SIRE	DAM
BW	-1.3	+2.4
WW	+62	+63
MILK	+30	+27
YW	+104	+104
DAM PDM		
BW	2/78	
WEAN	2/101	

MCD UNO 728  
**MED ROCK UNO SPRINTRESS 057**  
 MED ROCK SPRINTRESS 141

GED EPD	WT	BIRTH EPD	WEANING EPD	205	365	YEARLING EPD	MILK EPD	SM	SW	SC CM
1+7	83	1+0.6	628	1+63	1001	1+105	1+28	80	58	36.0

**MED ROCK** **LOT 12** **MED ROCK BLACK HULA 345**  
 Bull - Born 3/28/23 Tag 031 Reg. #20907998

B BAR BLACK MASS 3045  
**B BAR BLACK MASS 4907**  
 B BAR LADY JEWEL 490

EPDS		
	SIRE	DAM
BW	-1.3	+0.4
WW	+62	+65
MILK	+30	+23
YW	+104	+96
DAM PDM		
BW	2/80	
WEAN	1/105	

KPHU 4055  
**MED ROCK BECKY HULA 031**  
 MED ROCK BECKY CHARGE 6023

GED EPD	WT	BIRTH EPD	WEANING EPD	205	365	YEARLING EPD	MILK EPD	SM	SW	SC CM
1+8	83	1-0.5	673	1+59	1077	1+101	1+26	83	59	37.0



### MED ROCK BLACK SPRINT 302

Bull - Born 3/19/23 Tag 673 Reg. #20907967

B BAR BLACK MASS 3045  
B BAR BLACK MASS 4907  
B BAR LADY JEWEL 490

BOVAGENE SPRINT OF LCR  
MED ROCK LUCY SPRINT 673  
MED ROCK LUCY SA 161

EPDS		
	SIRE	DAM
BW	-1.3	+3.3
WW	+62	+48
MILK	+30	+91
YW	+104	+22
DAM PDR		
BW	4/87	
WEAN	4/98	

GED EPD	BIRTH WT	BIRTH EPD	WEANING 205 EPD	WEANING 365 EPD	YEARLING 365 EPD	MILK EPD	\$M	\$W	SC CM	
1-4	88	1-1.0	618	1-56	1000	1-98	1-26	73	51	40.0



### SPRING MONOLITH 317

Bull - Born 3/19/23 Tag S317 Reg. #20908560

S A V PYRAMID 8186  
PYRAMID 8186 1222  
SUMMIT GINA 76

1441 RESOURCE 6804 RS  
DAKOTA BLACKBIRD 17-161  
DAKOTA BLACKBIRD 11-902

EPDS		
	SIRE	DAM
BW	+2.7	+0.6
WW	+58	+41
MILK	+29	+22
YW	+103	+75
DAM PDR		
BW	5/78	
WEAN	5/95	

GED EPD	BIRTH WT	BIRTH EPD	WEANING 205 EPD	WEANING 365 EPD	YEARLING 365 EPD	MILK EPD	\$M	\$W	SC CM	
+5	82	+1.6	664	+59	1130	+102	+25	55	54	37.4

Should work on larger framed helpers and cows.



### MED ROCK COOL BLACK 306

Bull - Born 3/28/23 Tag 943 Reg. #20907970

B BAR BLACK MASS 3045  
B BAR BLACK MASS 4907  
B BAR LADY JEWEL 490

MED ROCK BEAVER CREEK 628  
MED ROCK SPRINT CREEK 943  
MED ROCK CEDAR SPRINT 694

EPDS		
	SIRE	DAM
BW	-1.3	-0.1
WW	+62	+51
MILK	+30	+23
YW	+104	+92
DAM PDR		
BW	1/86	
WEAN	1/99	

GED EPD	BIRTH WT	BIRTH EPD	WEANING 205 EPD	WEANING 365 EPD	YEARLING 365 EPD	MILK EPD	\$M	\$W	SC CM	
+6	86	+0	685	+53	941	+85	+25	86	57	37.0



### SPRING PYRAMID SCHEME 305

Bull - Born 3/10/23 Tag S305 Reg. #20908555

S A V PYRAMID 8186  
PYRAMID 8186 1222  
SUMMIT GINA 76

MED ROCK EMBLAZON CC MLM 778  
SPRING FOREVER BLAZE 900  
MED ROCK FOREVER WEIGHT 536

EPDS		
	SIRE	DAM
BW	+2.7	-1.3
WW	+58	+48
MILK	+29	+25
YW	+103	+86
DAM PDR		
BW	3/77	
WEAN	3/99	

GED EPD	BIRTH WT	BIRTH EPD	WEANING 205 EPD	WEANING 365 EPD	YEARLING 365 EPD	MILK EPD	\$M	\$W	SC CM	
+7	75	-3	570	+52	952	+92	+27	62	51	37.2

Recommend for heifers.



### MED ROCK BLACK SIRE 323

Bull - Born 3/25/23 Tag 720 Reg. #20907982

B BAR BLACK MASS 3045  
B BAR BLACK MASS 4907  
B BAR LADY JEWEL 490

VAR CASH 547  
MED ROCK GALA CASH 720  
MED ROCK GALA COALITION 4026

EPDS		
	SIRE	DAM
BW	-1.3	+1.6
WW	+62	+60
MILK	+30	+28
YW	+104	+112
DAM PDR		
BW	2/81	
WEAN	2/102	

GED EPD	BIRTH WT	BIRTH EPD	WEANING 205 EPD	WEANING 365 EPD	YEARLING 365 EPD	MILK EPD	\$M	\$W	SC CM	
1-6	78	1-0.3	650	1-61	1034	1-109	1-29	73	58	37.0



### SPRING PRISM 309

Bull - Born 3/10/23 Tag S309 Reg. #20908557

S A V PYRAMID 8186  
PYRAMID 8186 1222  
SUMMIT GINA 76

CENTENNIAL SUPREME 312  
EULIMA 16-475  
WESTERN EULIMA 14-924

EPDS		
	SIRE	DAM
BW	+2.7	-0.7
WW	+58	+50
MILK	+29	+20
YW	+103	+73
DAM PDR		
BW	6/72	
WEAN	6/95	

GED EPD	BIRTH WT	BIRTH EPD	WEANING 205 EPD	WEANING 365 EPD	YEARLING 365 EPD	MILK EPD	\$M	\$W	SC CM	
+4	79	+1.1	501	+47	914	+79	+24	56	44	33.8

Should work on heifers.



### SPRING SPHINX 307

Bull - Born 3/10/23 Tag S307 Reg. #20908556

S A V PYRAMID 8186  
PYRAMID 8186 1222  
SUMMIT GINA 76

VDAR SONNY BOY 7876  
PROUD ERICA 18-604  
PROUD ERICA 16-059

EPDS		
	SIRE	DAM
BW	+2.7	+0.5
WW	+58	+46
MILK	+29	+25
YW	+103	+81
DAM PDR		
BW	4/75	
WEAN	4/102	

GED EPD	BIRTH WT	BIRTH EPD	WEANING 205 EPD	WEANING 365 EPD	YEARLING 365 EPD	MILK EPD	\$M	\$W	SC CM	
+7	79	+1.3	630	+57	1052	+98	+27	43	54	39.0

Should work on larger framed helpers and cows. 307 has been a stand out from birth and is backed by a very nice dam.



### SPRING CRYPT 312

Bull - Born 3/11/23 Tag S312 Reg. #20908558

S A V PYRAMID 8186  
PYRAMID 8186 1222  
SUMMIT GINA 76

B BAR BLACK MASS 4907  
SPRING MONA LUND 019  
MED ROCK EL MONA KS 3020

EPDS		
	SIRE	DAM
BW	+2.7	-0.4
WW	+58	+59
MILK	+29	+32
YW	+103	+92
DAM PDR		
BW	2/78	
WEAN	2/109	

GED EPD	BIRTH WT	BIRTH EPD	WEANING 205 EPD	WEANING 365 EPD	YEARLING 365 EPD	MILK EPD	\$M	\$W	SC CM	
+5	74	-2	571	+54	1033	+90	+30	64	57	36.2

Should work on heifers.

**SPRING 21**  
ANGUS

**LOT 21**  
Bull - Born 3/13/23 Tag S314 Commercial

S A V PYRAMID 8186  
PYRAMID 8186 1222  
SUMMIT GINA 76

MED ROCK EMBLAZON CC MLM 778  
SPRING BLAZE 903  
SPRING 503

EPDS	
SIRE	DAM
BW	+2.7
WW	+58
MILK	+29
YW	+103
DAM PDN	
BW	
WEAN	

GED EPD	WT	BIRTH EPD	WEANING EPD	YEARLING EPD	MILK EPD	SM	SW	SC CM
	82		600	970				32.0

Cow bull.

**LOT 25**  
MED ROCK

**MED ROCK COMMOTION LOAD 360**  
Bull - Born 3/30/23 Tag M941 Reg. #20920848

SITZ RELOAD 411C  
MED ROCK RELOAD CONTRAST 949  
MED ROCK PEGGY CONTRAST 226

VAR COMMOTION 650  
MED ROCK COMMOTION ROSE 941  
MED ROCK MLM ROSE 239

EPDS	
SIRE	DAM
BW	+5.3
WW	+64
MILK	+30
YW	+133
DAM PDN	
BW	1/85
WEAN	1/100

GED EPD	WT	BIRTH EPD	WEANING EPD	YEARLING EPD	MILK EPD	SM	SW	SC CM
+2	85	+2.5	632	1060	+29	73	46	35.0

**LOT 22**  
MED ROCK

**MED ROCK POWER LOAD 380**  
Bull - Born 3/25/23 Tag 479 Reg. #20908021

SITZ RELOAD 411C  
MED ROCK RELOAD CONTRAST 949  
MED ROCK PEGGY CONTRAST 226

PA POWER TOOL 9108  
MED ROCK POWER BONNIE 479  
MED ROCK BONNIE LO 785

EPDS	
SIRE	DAM
BW	+5.3
WW	+64
MILK	+30
YW	+133
DAM PDN	
BW	4/87
WEAN	4/99

GED EPD	WT	BIRTH EPD	WEANING EPD	YEARLING EPD	MILK EPD	SM	SW	SC CM
+3	87	+3.8	648	1115	+109	84	46	35.0

**LOT 26**  
MED ROCK

**MED ROCK 949 CONTRAST 368**  
Bull - Born 3/17/23 Tag 285 Reg. #20908015

SITZ RELOAD 411C  
MED ROCK RELOAD CONTRAST 949  
MED ROCK PEGGY CONTRAST 226

ROCK'N D PROFICIENT 2915  
MED ROCK PRO BEAUTY 285  
MED ROCK BEAUTY JR BKST 477

EPDS	
SIRE	DAM
BW	+5.3
WW	+64
MILK	+30
YW	+133
DAM PDN	
BW	8/85
WEAN	8/100

GED EPD	WT	BIRTH EPD	WEANING EPD	YEARLING EPD	MILK EPD	SM	SW	SC CM
+5	82	+4.2	613	1012	+105	60	39	37.0

**LOT 23**  
MED ROCK

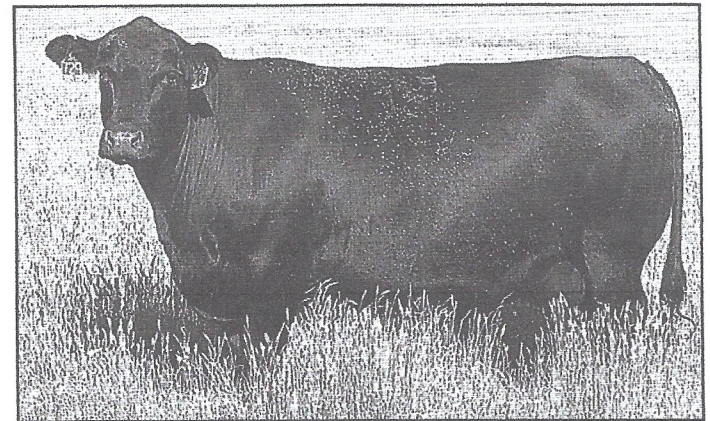
**MED ROCK PRAIRIE CONT 314**  
Bull - Born 3/19/23 Tag 6029 Reg. #20907977

SITZ RELOAD 411C  
MED ROCK RELOAD CONTRAST 949  
MED ROCK PEGGY CONTRAST 226

CONNELY COMRADE 1385  
MED ROCK PRAIRIE COM 6029  
MED ROCK PRAIRIE DIAMOND 225

EPDS	
SIRE	DAM
BW	+5.3
WW	+64
MILK	+30
YW	+133
DAM PDN	
BW	4/80
WEAN	4/106

GED EPD	WT	BIRTH EPD	WEANING EPD	YEARLING EPD	MILK EPD	SM	SW	SC CM
+2	87	+3.8	639	1058	+114	79	49	36.0



"NCC DIXIE ERICA 729" - DAM OF LOT 27

**LOT 24**  
MED ROCK

**MED ROCK PARTNER 319**  
Bull - Born 3/23/23 Tag 4013 Reg. #20907980

SITZ RELOAD 411C  
MED ROCK RELOAD CONTRAST 949  
MED ROCK PEGGY CONTRAST 226

STENBERG COALITION 509  
MED ROCK SASSY COAL 4013  
MED ROCK SASSY BB823

EPDS	
SIRE	DAM
BW	+5.3
WW	+64
MILK	+30
YW	+133
DAM PDN	
BW	4/85
WEAN	4/95

GED EPD	WT	BIRTH EPD	WEANING EPD	YEARLING EPD	MILK EPD	SM	SW	SC CM
+1	85	+2.4	598	1033	+99	82	47	

**LOT 27**  
SPRING 27

**SPRING 308 REVOLVER**  
Bull - Born 3/10/23 Tag S308 Reg. #20909282

S A V RESOURCE 1441  
SITZ RELOAD 411C  
SITZ FOREVER LADY 612T

SINCLAIR EMULATION XXP  
NCC DIXIE ERICA 729  
NCC DIXIE ERICA 3029

EPDS	
SIRE	DAM
BW	-0.5
WW	+54
MILK	+35
YW	+113
DAM PDN	
BW	3/79
WEAN	3/101

GED EPD	WT	BIRTH EPD	WEANING EPD	YEARLING EPD	MILK EPD	SM	SW	SC CM
+1	92	+1.7	566	1044	+102	69	48	35.6

308 has an incredible pedigree with some of the best females and female makers in the breed. NCC Dixie Erica 729, dam of 308, is one of our Donor Dams. Herd sire prospect.

**LOT 28**  
**SPRING**  
ANGUS

**SPRING RESTOCK 311**

Bull - Born 3/11/23 Tag S311 Reg. #20909281

S A V RESOURCE 1441

**SITZ RELOAD 411C**

SITZ FOREVER LADY 612T

KPHU 4055

**SPRING ADELE HULA 101**

MED ROCK OLE ADELE 2000

EPDS	
SIRE	DAM
BW	-0.5 +1.0
WW	+54 +51
MILK	+35 +27
YW	+113 +89
DAM PDN	
BW	1/66
WEAN	1/100

GED EPD	BIRTH WT	EPD	WEANING 205	EPD	YEARLING 365	EPD	MILK EPD	SM	SW	SC CM
+9	66	-7	577	+51	980	+99	+31	92	51	31.2

Should work on helpers.



"MED ROCK MLM ROSE 239" - 12 YEAR OLD DAM OF LOT 32

**LOT 29**  
**SPRING**  
ANGUS

**SPRING TACTICAL 313**

Bull - Born 3/13/23 Tag S313 Reg. #20909287

S A V RESOURCE 1441

**SITZ RELOAD 411C**

SITZ FOREVER LADY 612T

C R A BEXTOR 872 5205 608

**MED ROCK MONA BEXTOR KS 528**

MED ROCK EL MONA KS 3020

EPDS	
SIRE	DAM
BW	-0.5 +1.4
WW	+54 +51
MILK	+35 +30
YW	+113 +80
DAM PDN	
BW	7/87
WEAN	7/107

GED EPD	BIRTH WT	EPD	WEANING 205	EPD	YEARLING 365	EPD	MILK EPD	SM	SW	SC CM
+1	96	+2.2	571	+52	1069	+97	+33	74	49	36.0

Cow bull, backed by one of our heaviest WW cow families.

**LOT 32**  
**MED ROCK**

**MED ROCK LEATHER ROCK 307**

Bull - Born 3/19/23 Tag 2016 Reg. #20920846

S A V RESOURCE 1441

**MED ROCK RESOURCE 112**

MED ROCK MARRI BART 646

BIG ROK OLE 450

**MED ROCK MLM ROSE 239**

MED ROCK ROSE 2021 866

EPDS	
SIRE	DAM
BW	+0.8 +0.3
WW	+63 +55
MILK	+20 +28
YW	+113 +91
DAM PDN	
BW	7/79
WEAN	7/101

GED EPD	BIRTH WT	EPD	WEANING 205	EPD	YEARLING 365	EPD	MILK EPD	SM	SW	SC CM
+6	85	+1.0	656	+53	950	+93	+27	82	52	35.0

**LOT 30**  
**MED ROCK**

**MED ROCK BLACK RESOURCE 379**

Bull - Born 3/25/23 Tag M016 Reg. #20908020

S A V RESOURCE 1441

**MED ROCK RESOURCE 112**

MED ROCK MARRI BART 646

B BAR BLACK MASS 4907

**MED ROCK BLACK LUCI 016**

MED ROCK COMRAD LUCI MLM 613

EPDS	
SIRE	DAM
BW	+0.8 -0.3
WW	+63 +56
MILK	+20 +30
YW	+113 +98
DAM PDN	
BW	1/76
WEAN	1/99

GED EPD	BIRTH WT	EPD	WEANING 205	EPD	YEARLING 365	EPD	MILK EPD	SM	SW	SC CM
+7	76	+0.3	659	+60	1123	+106	+25	80	52	34.0

**LOT 33**  
**MED ROCK**

**MED ROCK MLM RESOURCE 382**

Bull - Born 4/14/23 Tag M030 Reg. #20908023

S A V RESOURCE 1441

**MED ROCK RESOURCE 112**

MED ROCK MARRI BART 646

B BAR BLACK MASS 4907

**MED ROCK BLACK ROSE MLM 030**

MED ROCK MLM ROSE 239

EPDS	
SIRE	DAM
BW	+0.8 +0.5
WW	+63 +57
MILK	+20 +31
YW	+113 +96
DAM PDN	
BW	1/82
WEAN	1/103

GED EPD	BIRTH WT	EPD	WEANING 205	EPD	YEARLING 365	EPD	MILK EPD	SM	SW	SC CM
+6	82	+0.7	683	+60	1094	+105	+26	84	55	34.0

**LOT 31**  
**MED ROCK**

**MED ROCK HULA SOURCE 303**

Bull - Born 3/27/23 Tag 957 Reg. #20920845

S A V RESOURCE 1441

**MED ROCK RESOURCE 112**

MED ROCK MARRI BART 646

KPHU 4055

**MED ROCK TONI HULA 957**

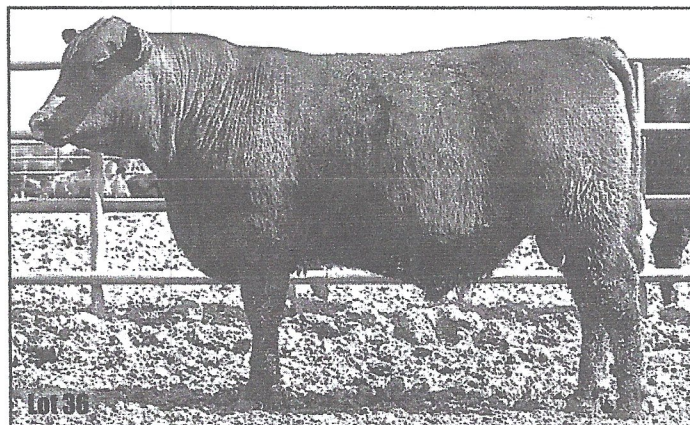
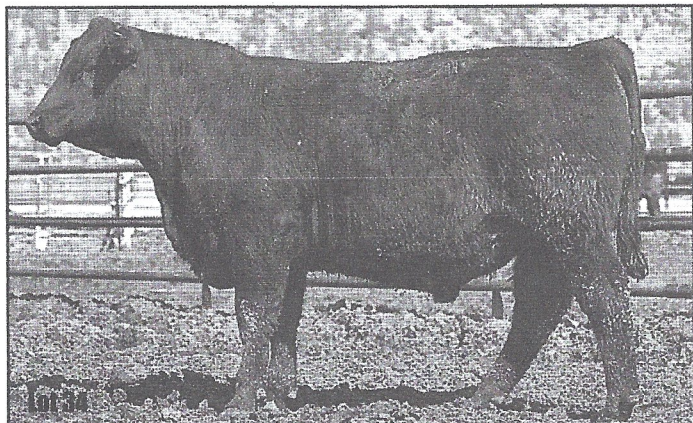
MED ROCK TONI EL 661

EPDS	
SIRE	DAM
BW	+0.8 +2.1
WW	+63 +47
MILK	+20 +27
YW	+113 +85
DAM PDN	
BW	1/86
WEAN	1/96

GED EPD	BIRTH WT	EPD	WEANING 205	EPD	YEARLING 365	EPD	MILK EPD	SM	SW	SC CM
+5	87	+1.5	697	+50	1059	+95	+23	72	45	34.0



Paul and Michelle Mehling.



**MED ROCK** **LOT 34** **330-B23**  
 Bull - Born 3/22/23 Tag 047 Not Registered

S A V RESOURCE 1441  
**MED ROCK RESOURCE 112**  
 MED ROCK MARRI BART 646

MCD UNO 808  
**MED ROCK ROCK'N UNO 047**  
 MED ROCK MISS CC 793

EPDS	
SIRE	DAM
BW	+0.8
WW	+63
MILK	+20
YW	+113
DAM PDN	
BW	
WEAN	

CEP	BIRTH	WEANING	YEARLING	MILK	SM	SW	SC
EPD	WT	EPD	EPD	EPD	EPD	EPD	CM
	76	680	1093				36.0

**MED ROCK** **LOT 36** **MED ROCK BEAVER BOOK 300**  
 Bull - Born 3/26/23 Tag M995 Reg. #20907965

BASIN PAYWEIGHT 1682  
**TEX PLAYBOOK 5437**  
 RITA 1C43 OF 9M26 COMPLETE

MED ROCK BEAVER CREEK 628  
**MED ROCK BEAVER ROSE 995**  
 MED ROCK VIN ROSE 935

EPDS	
SIRE	DAM
BW	-0.1
WW	+60
MILK	+36
YW	+104
DAM PDN	
BW	1/83
WEAN	1/88

CEP	BIRTH	WEANING	YEARLING	MILK	SM	SW	SC
EPD	WT	EPD	EPD	EPD	EPD	EPD	CM
18	83	603	554	148	984	184	121
					81	49	32.0

**MED ROCK** **LOT 35** **MED ROCK OLE BOOK 375**  
 Bull - Born 3/19/23 Tag 6005 Reg. #20908018

BASIN PAYWEIGHT 1682  
**TEX PLAYBOOK 5437**  
 RITA 1C43 OF 9M26 COMPLETE

LARSEN REALLY WINDY 14N  
**MED ROCK MISS OLE WIND 6005**  
 MED ROCK MISS MOLLY 448

EPDS	
SIRE	DAM
BW	-0.1
WW	+60
MILK	+36
YW	+104
DAM PDN	
BW	4/82
WEAN	4/104

CEP	BIRTH	WEANING	YEARLING	MILK	SM	SW	SC
EPD	WT	EPD	EPD	EPD	EPD	EPD	CM
1-7	78	1-1.5	691	1-58	1098	1-102	1-32
					92	59	36.0

**MED ROCK** **LOT 37** **MED ROCK PLAYBOOK 316**  
 Bull - Born 3/17/23 Tag 368 Reg. #20907979

BASIN PAYWEIGHT 1682  
**TEX PLAYBOOK 5437**  
 RITA 1C43 OF 9M26 COMPLETE

BOVAGENE SPRINT OF LCR  
**MED ROCK SAGE SPRINT 368**  
 MED ROCK SAGE 752

EPDS	
SIRE	DAM
BW	-0.1
WW	+60
MILK	+36
YW	+104
DAM PDN	
BW	6/75
WEAN	6/97

CEP	BIRTH	WEANING	YEARLING	MILK	SM	SW	SC
EPD	WT	EPD	EPD	EPD	EPD	EPD	CM
1-13	75	1-1.2	640	1-49	976	1-85	1-31
					94	55	35.5



Kellen McCalmont

**MED ROCK** **LOT 38** **MED ROCK REBOOK 355**  
 Bull - Born 3/16/23 Tag 6023 Reg. #20908005

BASIN PAYWEIGHT 1682  
**TEX PLAYBOOK 5437**  
 RITA 1C43 OF 9M26 COMPLETE

S A V RECHARGE 3436  
**MED ROCK BECKY CHARGE 6023**  
 MED ROCK BECKYMAN 128

EPDS	
SIRE	DAM
BW	-0.1
WW	+60
MILK	+36
YW	+104
DAM PDN	
BW	5/86
WEAN	5/100

CEP	BIRTH	WEANING	YEARLING	MILK	SM	SW	SC
EPD	WT	EPD	EPD	EPD	EPD	EPD	CM
1-7	93	1-1.1	668	1-58	949	1-100	1-29
					94	58	35.0

**MED ROCK 39** **MED ROCK TEX UPWARD P365**  
 Bull - Born 3/18/23 Tag P065 Reg. #20908012

BASIN PAYWEIGHT 1682  
**TEX PLAYBOOK 5437**  
 RITA 1C43 OF 9M26 COMPLETE

SITZ UPWARD 307R  
**MED ROCK PAULA UPWARD 065**  
 MED ROCK PAULA ALI PM 263

EPDS	
SIRE	DAM
BW	-0.1 +1.6
WW	+60 +56
MILK	+36 +30
YW	+104 +107
DAM PDM	
BW	11/88
WEAN	11/101

CED EPD	BIRTH WT	EPD	WEANING 205 EPD	YEARLING 365 EPD	MILK EPD	\$M	\$W	SC CM
1+9	75	1+0.8	599	1+58	1014	1+105	1+33	80 48 37.0

**MED ROCK 43** **MED ROCK OLE BEAVER 333**  
 Bull - Born 4/07/23 Tag 173 Reg. #20907988

S A V RECHARGE 3436  
**MED ROCK BEAVER CREEK 628**  
 MED ROCK 707 616 071

BIG ROK OLE 450  
**MED ROCK OLENA 173**  
 MED ROCK KORMA 702 796

EPDS	
SIRE	DAM
BW	+0 +2.1
WW	+51 +50
MILK	+20 +89
YW	+90 +35
DAM PDM	
BW	9/86
WEAN	9/104

CED EPD	BIRTH WT	EPD	WEANING 205 EPD	YEARLING 365 EPD	MILK EPD	\$M	\$W	SC CM
1+4	82	1+1.0	672	1+51	1076	1+90	1+28	57 47 37.0

**MED ROCK 40** **MED ROCK PLAYBOOK PM 374**  
 Bull - Born 3/19/23 Tag 608 Reg. #20908017

BASIN PAYWEIGHT 1682  
**TEX PLAYBOOK 5437**  
 RITA 1C43 OF 9M26 COMPLETE

PA POWER TOOL 9108  
**MED ROCK POWER KIT PM 608**  
 MED ROCK HOOVER KIT PM 156

EPDS	
SIRE	DAM
BW	-0.1 +2.7
WW	+60 +58
MILK	+36 +30
YW	+104 +101
DAM PDM	
BW	4/84
WEAN	4/102

CED EPD	BIRTH WT	EPD	WEANING 205 EPD	YEARLING 365 EPD	MILK EPD	\$M	\$W	SC CM
1+7	80	1+1.3	608	1+59	886	1+102	1+33	96 62 35.0

**MED ROCK 44** **MED ROCK BEAVER RAIN 340**  
 Bull - Born 4/11/23 Tag 919 Reg. #20907995

S A V RECHARGE 3436  
**MED ROCK BEAVER CREEK 628**  
 MED ROCK 707 616 071

MED ROCK BEAVER CREEK 628  
**MED ROCK AMBER CREEK 919**  
 MED ROCK AMBER TOOL 651

EPDS	
SIRE	DAM
BW	+0 +0.9
WW	+51 +56
MILK	+20 +26
YW	+90 +107
DAM PDM	
BW	3/72
WEAN	3/100

CED EPD	BIRTH WT	EPD	WEANING 205 EPD	YEARLING 365 EPD	MILK EPD	\$M	\$W	SC CM
1+7	60	1+0.4	634	1+54	986	1+99	1+23	60 49 35.0

**MED ROCK 41** **MED ROCK WINDY BEAVER 321**  
 Bull - Born 3/17/23 Tag 948 Reg. #20907981

S A V RECHARGE 3436  
**MED ROCK BEAVER CREEK 628**  
 MED ROCK 707 616 071

S CHISUM 255  
**MED ROCK WINDY CHISM 948**  
 MED ROCK AMERICAN WIND 3019

EPDS	
SIRE	DAM
BW	+0 +1.3
WW	+51 +51
MILK	+20 +22
YW	+90 +85
DAM PDM	
BW	2/81
WEAN	2/95

CED EPD	BIRTH WT	EPD	WEANING 205 EPD	YEARLING 365 EPD	MILK EPD	\$M	\$W	SC CM
1+6	78	1+0.6	614	1+51	938	1+88	1+22	66 44 35.0

**MED ROCK 45** **MED ROCK BEAVER POWER 344**  
 Bull - Born 4/06/23 Tag 594 Reg. #20907997

S A V RECHARGE 3436  
**MED ROCK BEAVER CREEK 628**  
 MED ROCK 707 616 071

PA POWER TOOL 9108  
**MED ROCK ERICA POWER 594**  
 MED ROCK ERICA SA 862

EPDS	
SIRE	DAM
BW	+0 +3.1
WW	+51 +51
MILK	+20 +31
YW	+90 +88
DAM PDM	
BW	4/90
WEAN	4/100

CED EPD	BIRTH WT	EPD	WEANING 205 EPD	YEARLING 365 EPD	MILK EPD	\$M	\$W	SC CM
1+3	102	1+1.5	633	1+51	1005	1+89	1+26	63 41 34.0

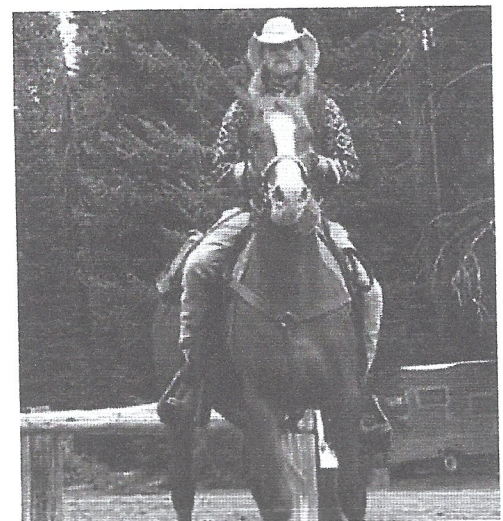
**MED ROCK 42** **MED ROCK BEAVER SPRINT 329**  
 Bull - Born 3/20/23 Tag 416 Reg. #20907985

S A V RECHARGE 3436  
**MED ROCK BEAVER CREEK 628**  
 MED ROCK 707 616 071

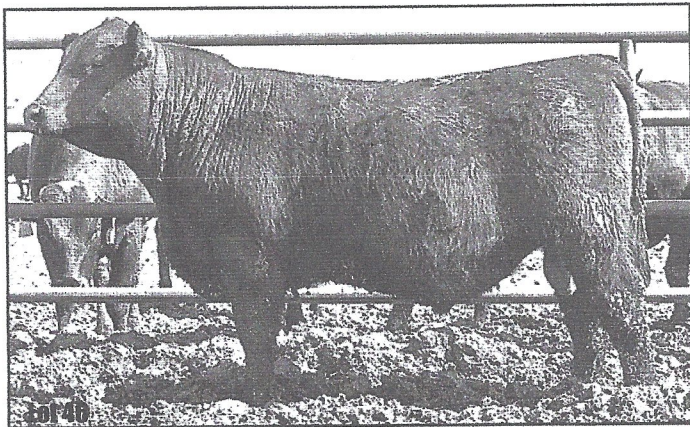
BOVAGENE SPRINT OF LCR  
**MED ROCK CRISTY SPRINT 416**  
 MED ROCK FRONT CRISTY 169

EPDS	
SIRE	DAM
BW	+0 +0.1
WW	+51 +46
MILK	+20 +24
YW	+90 +79
DAM PDM	
BW	6/83
WEAN	6/97

CED EPD	BIRTH WT	EPD	WEANING 205 EPD	YEARLING 365 EPD	MILK EPD	\$M	\$W	SC CM
1+8	85	1+0.0	591	1+49	980	1+85	1+22	62 43 37.0



Levi Joyce



**LOT 49**  
**MED ROCK 49** **MED ROCK PGM AMBUSH 310**  
 Bull - Born 3/23/23 Tag P884 Reg. #20907973

BANDOLIER ESTON DURNESS 42B  
 PARAMONT AMBUSH 2172  
 E W S MISS BURGESS 1720

MED ROCK BEAVER CREEK 628  
**MED ROCK MONA BEAVER PM 884**  
 MED ROCK MONA PM 336

EPDS		
	SIRE	DAM
BW	+0.7	+1.3
WW	+26	+54
MILK	+23	+22
YW	+41	+94
DAM PDM		
BW	3/87	
WEAN	4/99	

GED EPD	WT	BIRTH EPD	WEANING EPD	YEARLING EPD	MILK EPD	SM	SW	SC CM
+1	92	+1.0	606	+40	968	+68	+23	64 38 36.5

**LOT 46**  
**MED ROCK 46** **MED ROCK BLACK BEAVER 356**  
 Bull - Born 3/24/23 Tag 993 Reg. #20908006

S A V RECHARGE 3436  
 MED ROCK BEAVER CREEK 628  
 MED ROCK 707 616 071

B BAR BLACK MASS 4907  
**MED ROCK ULA JEWEL 993**  
 MED ROCK ULA 6014

EPDS		
	SIRE	DAM
BW	+0	-0.4
WW	+51	+62
MILK	+20	+31
YW	+90	+109
DAM PDM		
BW	1/78	
WEAN	1/95	

GED EPD	WT	BIRTH EPD	WEANING EPD	YEARLING EPD	MILK EPD	SM	SW	SC CM
+9	78	-0.3	630	+51	1108	+109	+23	57 48 37.0

**LOT 50**  
**MED ROCK 50** **MED ROCK WINDY AMBUSH 338**  
 Bull - Born 3/16/23 Tag 312 Reg. #20907993

BANDOLIER ESTON DURNESS 42B  
 PARAMONT AMBUSH 2172  
 E W S MISS BURGESS 1720

H A R B WINDY 758 J H  
**MED ROCK WINDY SAGE 312**  
 MED ROCK SAGE PRIME 1012

EPDS		
	SIRE	DAM
BW	+0.7	+0.5
WW	+26	+45
MILK	+23	+30
YW	+41	+81
DAM PDM		
BW	7/85	
WEAN	7/104	

GED EPD	WT	BIRTH EPD	WEANING EPD	YEARLING EPD	MILK EPD	SM	SW	SC CM
+0	85	+0.6	688	+36	1053	+61	+27	62 42 36.0

**LOT 47**  
**MED ROCK 47** **MED ROCK BEAVER MAN 381**  
 Bull - Born 5/03/23 Tag 128 Reg. #20908022

S A V RECHARGE 3436  
 MED ROCK BEAVER CREEK 628  
 MED ROCK 707 616 071

KESSLERS FRONTMAN R001  
**MED ROCK BECKYMAN 128**  
 MED ROCK BECKI SPIKE 603

EPDS		
	SIRE	DAM
BW	+0	+0.8
WW	+51	+42
MILK	+20	+28
YW	+90	+67
DAM PDM		
BW	8/82	
WEAN	9/100	

GED EPD	WT	BIRTH EPD	WEANING EPD	YEARLING EPD	MILK EPD	SM	SW	SC CM
+5	68	+0.4	765	+47	1184	+79	+24	74 54 31.0

**LOT 51**  
**MED ROCK 51** **MED ROCK BEAVER BUSH 357**  
 Bull - Born 3/16/23 Tag 921 Reg. #20908007

BANDOLIER ESTON DURNESS 42B  
 PARAMONT AMBUSH 2172  
 E W S MISS BURGESS 1720

MED ROCK BEAVER CREEK 628  
**MED ROCK ERICA BEAVER 921**  
 MED ROCK ERICA SURGE 642

EPDS		
	SIRE	DAM
BW	+0.7	+1.6
WW	+26	+59
MILK	+23	+24
YW	+41	+104
DAM PDM		
BW	2/76	
WEAN	1/101	

GED EPD	WT	BIRTH EPD	WEANING EPD	YEARLING EPD	MILK EPD	SM	SW	SC CM
+5	75	-0.3	655	+47	1065	+61	+25	60 45 35.0

**LOT 48**  
**MED ROCK 48** **MED ROCK CASHIER CREEK 384**  
 Bull - Born 4/13/23 Tag 808 Reg. #20908025

S A V RECHARGE 3436  
 MED ROCK BEAVER CREEK 628  
 MED ROCK 707 616 071

VAR CASH 547  
**MED ROCK ANNIE CASH 808**  
 MED ROCK PRIME ANNIE 177

EPDS		
	SIRE	DAM
BW	+0	+1.5
WW	+51	+58
MILK	+20	+97
YW	+90	+28
DAM PDM		
BW	4/79	
WEAN	4/99	

GED EPD	WT	BIRTH EPD	WEANING EPD	YEARLING EPD	MILK EPD	SM	SW	SC CM
+5	76	+0.7	624	+55	955	+94	+24	58 49 35.0

**LOT 52**  
**MED ROCK 52** **MED ROCK AMBUSH COWBOY 367**  
 Bull - Born 3/28/23 Tag 765 Reg. #20908014

BANDOLIER ESTON DURNESS 42B  
 PARAMONT AMBUSH 2172  
 E W S MISS BURGESS 1720

HA COWBOY UP 5405  
**MED ROCK COWGIRL CAT 765**  
 MED ROCK TOPPER CAT 385

EPDS		
	SIRE	DAM
BW	+0.7	+0.9
WW	+26	+58
MILK	+23	+22
YW	+41	+106
DAM PDM		
BW	2/73	
WEAN	2/100	

GED EPD	WT	BIRTH EPD	WEANING EPD	YEARLING EPD	MILK EPD	SM	SW	SC CM
+4	78	+0.8	651	+42	1056	+74	+23	68 46 38.0





### MED ROCK HULA CHISUM 335

Bull - Born 3/23/23 Tag 956 Reg. #20907990

MUSGRAVE BOULDER

KPHU 4055

KPHU 1056

S CHISUM 255

MED ROCK CHISUM CLARICE 956

MED ROCK ADA POWER 478

EPDS		
SIRE	DAM	
BW	+1.1	+0.5
WW	+59	+52
MILK	+25	+26
YW	+103	+85
DAM PDN		
BW	1/90	
WEAN	1/103	

GED EPD	BIRTH WT	BIRTH EPD	WEANING 205 EPD	WEANING EPD	YEARLING 365 EPD	MILK EPD	\$M	\$W	SC CM
1.5	90	12.7	707	10.4	1175	1118	125	64	48 38.0



### MED ROCK HULA RAIN 304

Bull - Born 3/25/23 Tag 910 Reg. #20907968

MUSGRAVE BOULDER

KPHU 4055

KPHU 1056

S A V RAINFALL 6846

MED ROCK CLARICE RAIN 910

MED ROCK CLARICE 069

EPDS		
SIRE	DAM	
BW	+1.1	-0.8
WW	+59	+44
MILK	+25	+23
YW	+103	+82
DAM PDN		
BW	1/85	
WEAN	1/98	

GED EPD	BIRTH WT	BIRTH EPD	WEANING 205 EPD	WEANING EPD	YEARLING 365 EPD	MILK EPD	\$M	\$W	SC CM
1.7	85	11	660	15.5	1083	1103	123	64	46 34.0



### MED ROCK HULA CASH MLM 309

Bull - Born 3/28/23 Tag M804 Reg. #20907972

MUSGRAVE BOULDER

KPHU 4055

KPHU 1056

VAR CASH 547

MED ROCK ROSIE CASH MLM 804

MED ROCK MLM ROSE 239

EPDS		
SIRE	DAM	
BW	+1.1	+0.5
WW	+59	+56
MILK	+25	+33
YW	+103	+96
DAM PDN		
BW	3/84	
WEAN	3/106	

GED EPD	BIRTH WT	BIRTH EPD	WEANING 205 EPD	WEANING EPD	YEARLING 365 EPD	MILK EPD	\$M	\$W	SC CM
1.7	91	11.8	624	15.8	1222	1100	130	65	49 33.0



### MED ROCK HULA POWER 313

Bull - Born 3/23/23 Tag 775 Reg. #20907975

MUSGRAVE BOULDER

KPHU 4055

KPHU 1056

PA POWER TOOL 9108

MED ROCK BECKI POWER 775

MED ROCK BECKYMAN 128

EPDS		
SIRE	DAM	
BW	+1.1	+1.0
WW	+59	+44
MILK	+25	+30
YW	+103	+79
DAM PDN		
BW	2/81	
WEAN	2/97	

GED EPD	BIRTH WT	BIRTH EPD	WEANING 205 EPD	WEANING EPD	YEARLING 365 EPD	MILK EPD	\$M	\$W	SC CM
1.8	85	11.1	667	15.2	1038	1191	128	72	51 35.0



### MED ROCK HULA SPRINT 315

Bull - Born 3/25/23 Tag 274 Reg. #20907978

MUSGRAVE BOULDER

KPHU 4055

KPHU 1056

BOVAGENE SPRINT OF LCR

MED ROCK SASSY SPRINT 274

MED ROCK SASSY CEDAR 090

EPDS		
SIRE	DAM	
BW	+1.1	+0.7
WW	+59	+50
MILK	+25	+19
YW	+103	+89
DAM PDN		
BW	7/80	
WEAN	7/95	

GED EPD	BIRTH WT	BIRTH EPD	WEANING 205 EPD	WEANING EPD	YEARLING 365 EPD	MILK EPD	\$M	\$W	SC CM
1.8	85	11.9	656	15.5	1024	1196	122	62	50 36.0



### MED ROCK HULA COMMAND 332

Bull - Born 3/13/23 Tag 712 Reg. #20907987

MUSGRAVE BOULDER

KPHU 4055

KPHU 1056

EF COMMANDO 1366

MED ROCK LUCI COMMAND 712

MED ROCK COMRADE LUCY 576

EPDS		
SIRE	DAM	
BW	+1.1	+0.6
WW	+59	+51
MILK	+25	+24
YW	+103	+92
DAM PDN		
BW	2/81	
WEAN	2/96	

GED EPD	BIRTH WT	BIRTH EPD	WEANING 205 EPD	WEANING EPD	YEARLING 365 EPD	MILK EPD	\$M	\$W	SC CM
1.10	80	11.3	625	15.5	983	1198	125	69	49 35.0



### MED ROCK HULA MAN 336

Bull - Born 3/23/23 Tag 407 Reg. #20907991

MUSGRAVE BOULDER

KPHU 4055

KPHU 1056

BOVAGENE SPRINT OF LCR

MED ROCK ULA 407

MED ROCK ULA CONVERTER 117

EPDS		
SIRE	DAM	
BW	+1.1	-0.4
WW	+59	+60
MILK	+25	+28
YW	+103	+104
DAM PDN		
BW	4/77	
WEAN	4/103	

GED EPD	BIRTH WT	BIRTH EPD	WEANING 205 EPD	WEANING EPD	YEARLING 365 EPD	MILK EPD	\$M	\$W	SC CM
1.9	78	11.4	645	16.0	1050	1104	127	62	60 35.5



### MED ROCK HULA SPRINT 349

Bull - Born 3/19/23 Tag 5006 Reg. #20908001

MUSGRAVE BOULDER

KPHU 4055

KPHU 1056

BOVAGENE SPRINT OF LCR

MED ROCK BECKI SPRINT 5006

MED ROCK BECKYMAN 125

EPDS		
SIRE	DAM	
BW	+1.1	+0.3
WW	+59	+49
MILK	+25	+27
YW	+103	+85
DAM PDN		
BW	4/79	
WEAN	4/100	

GED EPD	BIRTH WT	BIRTH EPD	WEANING 205 EPD	WEANING EPD	YEARLING 365 EPD	MILK EPD	\$M	\$W	SC CM
1.8	82	11.7	597	15.4	1025	1194	126	62	48 35.0

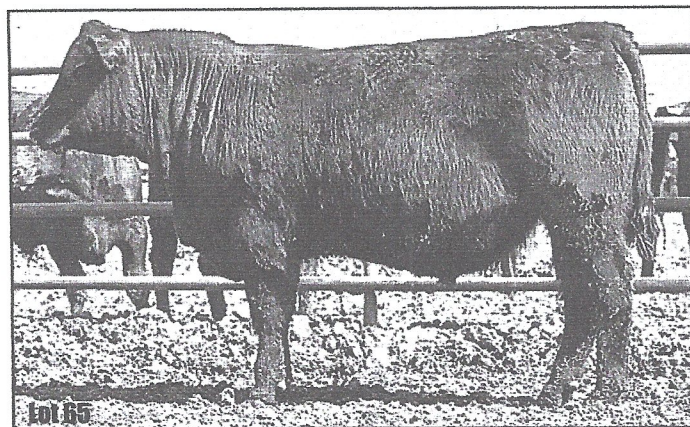
**LOT 61**  
**MED ROCK**

**MED ROCK HULA POWER 359**  
Bull - Born 3/20/23 Tag 602 Reg. #20908008

MUSGRAVE BOULDER  
KPHU 4055  
KPHU 1056

CONNEALY POWER SURGE 3115  
MED ROCK PEGGY POWER 602  
MED ROCK PEGGY IMAGE 9002

EPDS		
	SIRE	DAM
BW	+1.1	+2.8
WW	+59	+53
MILK	+25	+25
YW	+103	+90
DAM PDM		
BW	4/77	
WEAN	4/95	



GED EPD	BIRTH WT	EPD	WEANING 205	EPD	YEARLING 365	EPD	MILK EPD	\$M	\$W	SC CM
1+7	87	1+2.0	647	1+56	1042	1+97	1+25	64	52	33.0

**LOT 62**  
**MED ROCK**

**MED ROCK HULA BULL 369**  
Bull - Born 3/23/23 Tag 923 Not Registered

MUSGRAVE BOULDER  
KPHU 4055  
KPHU 1056

MAR INNOVATION 251  
MED ROCK MISS INO 923  
MED ROCK MISS SPRINT 2017

EPDS		
	SIRE	DAM
BW	+1.1	
WW	+59	
MILK	+25	
YW	+103	
DAM PDM		
BW		
WEAN		

GED EPD	BIRTH WT	EPD	WEANING 205	EPD	YEARLING 365	EPD	MILK EPD	\$M	\$W	SC CM
	80		609		973					33.0

**LOT 65**  
**MED ROCK**

**MED ROCK PAYLOAD 308**  
Bull - Born 4/10/23 Tag 8000 Reg. #20907971

BASIN PAYWEIGHT 1682  
SSR PAYWEIGHT 704E  
SSR EVANGELINE 478B

SITZ RELOAD 411C  
MED ROCK SASSY LOAD 8000  
MED ROK SASSY JUNO 325

EPDS		
	SIRE	DAM
BW	+1.7	+0.4
WW	+62	+53
MILK	+26	+28
YW	+120	+98
DAM PDM		
BW	2/77	
WEAN	2/100	

GED EPD	BIRTH WT	EPD	WEANING 205	EPD	YEARLING 365	EPD	MILK EPD	\$M	\$W	SC CM
1+5	82	1+0.7	649	1+58	1048	1+109	1+28	84	52	34.0

**LOT 63**  
**SPRING ANGUS**

**SPRING PROFICIENT 323**  
Bull - Born 3/27/23 Tag S323 Reg. #20908562

KPHU 4055  
MED ROCK PROFICIENT HULA 024  
MED ROCK ROK'N SASSY 291

MED ROCK EMBLAZON CC MLM 778  
SPRING DUTCHESS BLAZE 910  
RTS DUTCHESS 517-DV

EPDS		
	SIRE	DAM
BW	-0.1	+2.2
WW	+51	+53
MILK	+30	+27
YW	+89	+90
DAM PDM		
BW	3/80	
WEAN	3/99	

GED EPD	BIRTH WT	EPD	WEANING 205	EPD	YEARLING 365	EPD	MILK EPD	\$M	\$W	SC CM
+6	76	+2	556	+49	921	+85	+28	84	50	30.2

Recommend for heifers.

**LOT 66**  
**MED ROCK**

**MED ROCK POWER WEIGHT 312**  
Bull - Born 4/06/23 Tag 488 Reg. #20907974

BASIN PAYWEIGHT 1682  
SSR PAYWEIGHT 704E  
SSR EVANGELINE 478B

PA POWER TOOL 9108  
MED ROCK GOLD POWER 488  
MED ROCK GOLD CINCH 660

EPDS		
	SIRE	DAM
BW	+1.7	+1.2
WW	+62	+49
MILK	+26	+33
YW	+120	+90
DAM PDM		
BW	4/79	
WEAN	4/103	

GED EPD	BIRTH WT	EPD	WEANING 205	EPD	YEARLING 365	EPD	MILK EPD	\$M	\$W	SC CM
1+6	87	1+1.5	694	1+56	1032	1+105	1+30	85	52	34.0

**LOT 64**  
**MED ROCK**

**MED ROCK ROCK'N WEIGHT 301**  
Bull - Born 3/16/23 Tag 742 Reg. #20907966

BASIN PAYWEIGHT 1682  
SSR PAYWEIGHT 704E  
SSR EVANGELINE 478B

MED ROCK ROCK'N CC 552  
MED ROCK BEAUTY CC 742  
MED ROCK BEAUTY POWER 519

EPDS		
	SIRE	DAM
BW	+1.7	+0.1
WW	+62	+56
MILK	+26	+28
YW	+120	+104
DAM PDM		
BW	4/79	
WEAN	4/99	

GED EPD	BIRTH WT	EPD	WEANING 205	EPD	YEARLING 365	EPD	MILK EPD	\$M	\$W	SC CM
1+6	82	1+0.9	636	1+59	1020	1+112	1+28	77	51	37.0

**LOT 67**  
**MED ROCK**

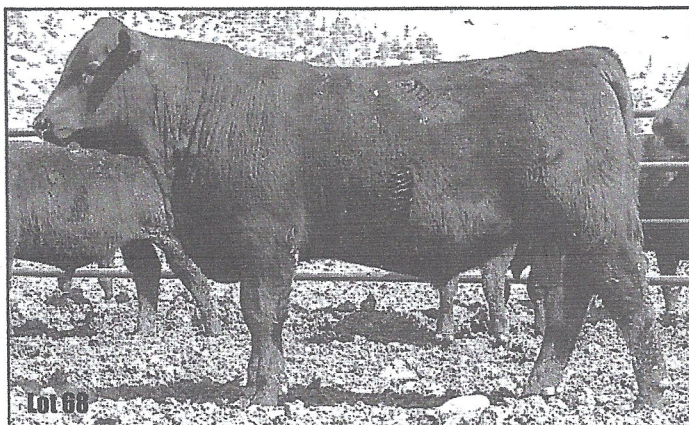
**MED ROCK PAYWEIGHT 339**  
Bull - Born 4/25/23 Tag 975 Reg. #20907994

BASIN PAYWEIGHT 1682  
SSR PAYWEIGHT 704E  
SSR EVANGELINE 478B

VAR COMMOTION 650  
MED ROCK ANNIE COMMOTION 975  
MED ROCK ANNIE SPRINT 1021

EPDS		
	SIRE	DAM
BW	+1.7	+2.6
WW	+62	+60
MILK	+26	+27
YW	+120	+109
DAM PDM		
BW	1/98	
WEAN	1/97	

GED EPD	BIRTH WT	EPD	WEANING 205	EPD	YEARLING 365	EPD	MILK EPD	\$M	\$W	SC CM
-3	98	+4.3	659	+50	1088	+113	+25	72	42	36.0



**MED ROCK 71** **MED ROCK DIESEL TOOL 358**  
 Bull - Born 3/16/23 Tag 6021 Reg. #20922333

DL DIESEL  
**BS BIG DIESEL S861**  
 TOUR WITH SINKS ANGUS S116  
 PA POWER TOOL 9108  
**MED ROCK SASSY TOOL 6021**  
 MED ROCK SASSY UPWARD 034

EPDS		
	SIRE	DAM
BW	+2.2	+3.9
WW	+70	+53
MILK	+22	+32
YW	+124	+109
DAM PDN		
BW	4/50	
WEAN	4/101	

GED EPD	BIRTH WT	EPD	WEANING 205 EPD	YEARLING 365 EPD	MILK EPD	\$M	\$W	\$C CM
+3	78	+3.1	550	+62	981	+112	+27	64 47 36.0

**MED ROCK 68** **MED ROCK PAYWEIGHT BOY 350**  
 Bull - Born 3/25/23 Tag 728 Reg. #20908002

BASIN PAYWEIGHT 1682  
**SSR PAYWEIGHT 704E**  
 SSR EVANGELINE 478B  
 VAR DAKOTA BOY 92  
**MED ROCK JESSIE DAKOTA 728**  
 MED ROCK BLACK JESSIE 452

EPDS		
	SIRE	DAM
BW	+1.7	+2.2
WW	+62	+60
MILK	+26	+25
YW	+120	+110
DAM PDN		
BW	3/81	
WEAN	3/106	

GED EPD	BIRTH WT	EPD	WEANING 205 EPD	YEARLING 365 EPD	MILK EPD	\$M	\$W	\$C CM
+3	85	+2.0	692	+61	1084	+115	+26	78 50 38.5

**MED ROCK 72** **MED ROCK DIESEL CONTRAST 366**  
 Bull - Born 4/05/23 Tag 828 Reg. #20908013

DL DIESEL  
**BS BIG DIESEL S861**  
 TOUR WITH SINKS ANGUS S116  
 BIG ROK OLE 450  
**MED ROCK CEDAR CONTRAST 828**  
 MED ROCK MRC CCBC 369

EPDS		
	SIRE	DAM
BW	+2.2	+1.5
WW	+70	+52
MILK	+22	+23
YW	+124	+90
DAM PDN		
BW	2/79	
WEAN	2/86	

GED EPD	BIRTH WT	EPD	WEANING 205 EPD	YEARLING 365 EPD	MILK EPD	\$M	\$W	\$C CM
+4	84	+1.7	664	+59	1012	+106	+26	65 46 41.0

**MED ROCK 69** **MED ROCK UNO PAYWEIGHT 364**  
 Bull - Born 3/15/23 Tag 028 Reg. #20908011

BASIN PAYWEIGHT 1682  
**SSR PAYWEIGHT 704E**  
 SSR EVANGELINE 478B  
 MCD UNO 728  
**MED ROCK LUCY UNO MLM 028**  
 MED ROCK BLACK LUCY MLM 064

EPDS		
	SIRE	DAM
BW	+1.7	+4.1
WW	+62	+79
MILK	+26	+31
YW	+120	+124
DAM PDN		
BW	2/70	
WEAN	1/99	

GED EPD	BIRTH WT	EPD	WEANING 205 EPD	YEARLING 365 EPD	MILK EPD	\$M	\$W	\$C CM
+2	85	+2.9	632	+63	1108	+113	+26	82 45 35.0

**MED ROCK 73** **MED ROCK DIESEL DRIVER 322**  
 Bull - Born 3/15/23 Tag 930 Reg. #20920778

DL DIESEL  
**BS BIG DIESEL S861**  
 TOUR WITH SINKS ANGUS S116  
 VAR COMMOTION 650  
**MED ROCK MISS MIDAS 930**  
 MED ROCK OLE MIDAS 428

EPDS		
	SIRE	DAM
BW	+2.2	+2.6
WW	+70	+52
MILK	+22	+27
YW	+124	+93
DAM PDN		
BW	1/72	
WEAN	1/97	

GED EPD	BIRTH WT	EPD	WEANING 205 EPD	YEARLING 365 EPD	MILK EPD	\$M	\$W	\$C CM
+8	72	+3.3	622	+53	910	+96	+25	67 54 33.0

**MED ROCK 70** **MED ROCK PRIME WEIGHT 383**  
 Bull - Born 3/12/23 Tag 1012 Reg. #20908024

BASIN PAYWEIGHT 1682  
**SSR PAYWEIGHT 704E**  
 SSR EVANGELINE 478B  
 HIGH PRIME 4037  
**MED ROCK SAGE PRIME 1012**  
 MED ROCK SAGE BB 456

EPDS		
	SIRE	DAM
BW	+1.7	-1.5
WW	+62	+46
MILK	+26	+27
YW	+120	+74
DAM PDN		
BW	9/76	
WEAN	9/98	

GED EPD	BIRTH WT	EPD	WEANING 205 EPD	YEARLING 365 EPD	MILK EPD	\$M	\$W	\$C CM
+7	86	+0.1	597	+54	957	+97	+27	70 50 36.0

**MED ROCK 74** **MED ROCK DIESEL TRUCK 326**  
 Bull - Born 4/08/23 Tag 920 Reg. #20907984

DL DIESEL  
**BS BIG DIESEL S861**  
 TOUR WITH SINKS ANGUS S116  
 KPHU 4055  
**MED ROCK BESSIE HULA 920**  
 MED ROCK LO BESS 956

EPDS		
	SIRE	DAM
BW	+2.2	+1.7
WW	+70	+50
MILK	+22	+26
YW	+124	+86
DAM PDN		
BW	1/94	
WEAN	1/103	

GED EPD	BIRTH WT	EPD	WEANING 205 EPD	YEARLING 365 EPD	MILK EPD	\$M	\$W	\$C CM
-1	94	+3.8	669	+58	1068	+106	+24	64 48 36.0

**MED ROCK 75** **MED ROCK DIESEL POWER 328**  
 Bull - Born 4/05/23 Tag 427 Reg. #20925438

DL DIESEL  
**BS BIG DIESEL S861**  
 TOUR WITH SINKS ANGUS S116

PA POWER TOOL 9108  
**MED ROCK BANIGAN POWER 427**  
 MED ROCK 702 BANIGAN 729

EPDS		
	SIRE	DAM
BW	+2.2	+0.9
WW	+70	+37
MILK	+22	+21
YW	+124	+63
DAM PDM		
BW	3/86	
WEAN	3/100	

GED EPD	BIRTH WT	EPD	WEANING 205 EPD	YEARLING 365 EPD	MILK EPD	\$M	\$W	SC CM
+1.3	85	+2.3	566	+61	960	+109	+26	63 46 34.0

**MED ROCK 79** **MED ROCK HULA DIESEL 363**  
 Bull - Born 4/19/23 Tag 955 Reg. #20908010

DL DIESEL  
**BS BIG DIESEL S861**  
 TOUR WITH SINKS ANGUS S116

KPHU 4055  
**MED ROCK HULA CLARICE 955**  
 MED ROCK CON CLARICE 365

EPDS		
	SIRE	DAM
BW	+2.2	+1.0
WW	+70	+55
MILK	+22	+25
YW	+124	+98
DAM PDM		
BW	1/77	
WEAN	1/101	

GED EPD	BIRTH WT	EPD	WEANING 205 EPD	YEARLING 365 EPD	MILK EPD	\$M	\$W	SC CM
+1.8	77	+0.1	632	+59	1005	+108	+24	62 49 35.0

**MED ROCK 76** **MED ROCK HULA DIESEL 331**  
 Bull - Born 4/21/23 Tag 801 Reg. #20907986

DL DIESEL  
**BS BIG DIESEL S861**  
 TOUR WITH SINKS ANGUS S116

KPHU 4055  
**MED ROCK HULA LUCI 801**  
 MED ROCK LUCI SPRINT 573

EPDS		
	SIRE	DAM
BW	+2.2	+1.7
WW	+70	+59
MILK	+22	+27
YW	+124	+105
DAM PDM		
BW	2/87	
WEAN	2/108	

GED EPD	BIRTH WT	EPD	WEANING 205 EPD	YEARLING 365 EPD	MILK EPD	\$M	\$W	SC CM
+1.5	96	+2.0	719	+65	1015	+115	+25	64 51 36.0

**MED ROCK 80** **MED ROCK FRONT EFFECTIVE 342**  
 Bull - Born 3/22/23 Tag 169 Reg. #20920847

A A R FRONTMAN 3132  
**LEES FRONTMAN 1168**  
 ALICIA 6198 LAR

SCHIEFELBEIN EFFECTIVE 61  
**MED ROCK MLM EFFECTIVE 169**  
 MED ROCK LUCI SPRINT MLM 252

EPDS		
	SIRE	DAM
BW	-0.9	+0.1
WW	+64	+51
MILK	+37	+27
YW	+115	+93
DAM PDM		
BW	1/85	
WEAN	1/98	

GED EPD	BIRTH WT	EPD	WEANING 205 EPD	YEARLING 365 EPD	MILK EPD	\$M	\$W	SC CM
+1.5	85	+1.9	610	+59	1088	+111	+31	73 54 34.0

**MED ROCK 77** **MED ROCK DIESEL FUEL 348**  
 Bull - Born 4/17/23 Tag 714 Reg. #20908000

DL DIESEL  
**BS BIG DIESEL S861**  
 TOUR WITH SINKS ANGUS S116

CONNELY COMRADE 1385  
**MED ROCK COMRADE LUCY 714**  
 MED ROCK SASSY CCBC 132

EPDS		
	SIRE	DAM
BW	+2.2	-1.2
WW	+70	+40
MILK	+22	+24
YW	+124	+78
DAM PDM		
BW	2/84	
WEAN	2/97	

GED EPD	BIRTH WT	EPD	WEANING 205 EPD	YEARLING 365 EPD	MILK EPD	\$M	\$W	SC CM
+1.8	106	+0.5	690	+55	1127	+102	+23	74 40 38.0

**MED ROCK 81** **MED ROCK RESILIENT MAN 343**  
 Bull - Born 3/20/23 Tag 146 Reg. #20923663

A A R FRONTMAN 3132  
**LEES FRONTMAN 1168**  
 ALICIA 6198 LAR

SITZ RESILIENT 10208  
**MED ROCK RESILIENT WT 146**  
 MED ROCK LASSIE WEIGHT 5016

EPDS		
	SIRE	DAM
BW	-0.9	-1.2
WW	+64	+43
MILK	+37	+28
YW	+115	+81
DAM PDM		
BW	1/75	
WEAN	1/96	

GED EPD	BIRTH WT	EPD	WEANING 205 EPD	YEARLING 365 EPD	MILK EPD	\$M	\$W	SC CM
+1.7	75	+0.3	602	+60	1042	+109	+30	91 57 36.0

**MED ROCK 78** **MED ROCK COMRADE DIESEL 361**  
 Bull - Born 5/10/23 Tag 576 Reg. #20908009

DL DIESEL  
**BS BIG DIESEL S861**  
 TOUR WITH SINKS ANGUS S116

CONNELY COMRADE 1385  
**MED ROCK COMRADE LUCY 576**  
 MED ROCK LUCI FACTOR 072

EPDS		
	SIRE	DAM
BW	+2.2	+1.1
WW	+70	+51
MILK	+22	+26
YW	+124	+96
DAM PDM		
BW	4/72	
WEAN	4/100	

GED EPD	BIRTH WT	EPD	WEANING 205 EPD	YEARLING 365 EPD	MILK EPD	\$M	\$W	SC CM
+1.6	84	+1.7	704	+61	1010	+111	+24	74 52 34.0

**MED ROCK 82** **MED ROCK FRONT CREEK 351** *pending registration*  
 Bull - Born 3/24/23 Tag 140 *Commercial*  
 Reg. #20933253

A A R FRONTMAN 3132  
**LEES FRONTMAN 1168**  
 ALICIA 6198 LAR

MED ROCK BEAVER CREEK 628  
**MED ROCK ANNIE CREEK 140**  
 MED ROCK ANNIE LOAD 897

EPDS		
	SIRE	DAM
BW	-0.9	-0.9
WW	+64	+46
MILK	+37	+27
YW	+115	+88
DAM PDM		
BW		
WEAN		

GED EPD	BIRTH WT	EPD	WEANING 205 EPD	YEARLING 365 EPD	MILK EPD	\$M	\$W	SC CM
+1.8	70		708					31.0

**MED ROCK 83**

**MED ROCK SPRINTMAN 362**

Bull - Born 3/17/23 Tag 159 Reg. #20922464

A A R FRONTMAN 3132  
LEES FRONTMAN 1168  
ALICIA 6198 LAR

S A V RESOURCE 1441  
MED ROCK RESOURCE SPRINT 159  
MED ROCK ULA 407

EPDS		
	SIRE	DAM
BW	-0.9	-0.4
WW	+64	+60
MILK	+37	+28
YW	+115	+104
DAM PDM		
BW	1/77	
WEAN	1/106	

GED EPD	BIRTH WT	EPD	WEANING 205 EPD	YEARLING 365 EPD	MILK EPD	\$M	\$W	SC CM
+7	77	+0.1	638	+67	1010	+118	+30	75 63 35.0

**MED ROCK 87**

**MED ROCK BLUE FRONT 378**

Bull - Born 3/14/23 Tag 137 Reg. #20927911

A A R FRONTMAN 3132  
LEES FRONTMAN 1168  
ALICIA 6198 LAR

WOODHILL BLUEPRINT  
MED ROCK BLUE CHARGE 137  
MED ROCK MISS CHARGE MLM 752

EPDS		
	SIRE	DAM
BW	-0.9	+0.3
WW	+64	+43
MILK	+37	+69
YW	+115	+22
DAM PDM		
BW	1/88	
WEAN	1/108	

GED EPD	BIRTH WT	EPD	WEANING 205 EPD	YEARLING 365 EPD	MILK EPD	\$M	\$W	SC CM
+1	88	+3.0	656	+12	1140	+136	+31	57 57 34.0

**MED ROCK 84**

**MED ROCK FRONT ENGAGE 370**

Bull - Born 3/11/23 Tag 164 Reg. #20920849

A A R FRONTMAN 3132  
LEES FRONTMAN 1168  
ALICIA 6198 LAR

COLEMAN ENGAGE 5255  
MED ROCK OLENA ENGAGE 164  
MED ROCK OLENA 173

EPDS		
	SIRE	DAM
BW	-0.9	+1.2
WW	+64	+56
MILK	+37	+32
YW	+115	+98
DAM PDM		
BW	2/79	
WEAN	1/105	

GED EPD	BIRTH WT	EPD	WEANING 205 EPD	YEARLING 365 EPD	MILK EPD	\$M	\$W	SC CM
+8	77	+0.9	656	+65	1010	+119	+34	78 61 36.0

**MED ROCK 88**

**MED ROCK HULA 808 311** Reg. #20938377

Bull - Born 3/21/23 Tag 117 Commercial

C C A UNO 049  
MCD UNO 808  
MCD-1 POWERESS 329

KPHU 4055  
MED ROCK MISS HULA 117  
MED ROCK TOPPER CAT 385

EPDS		
	SIRE	DAM
BW	+0.9	+0.4
WW	+56	+51
MILK	+34	+27
YW	+93	+91
DAM PDM		
BW	1/68	
WEAN	1/105	

GED EPD	BIRTH WT	EPD	WEANING 205 EPD	YEARLING 365 EPD	MILK EPD	\$M	\$W	SC CM
+10	68	-0.0	654	+57	1010	+96	+32	81 61 34.0

**MED ROCK 85**

**MED ROCK PAYMAN 372**

Bull - Born 3/07/23 Tag 158 Reg. #20920850

A A R FRONTMAN 3132  
LEES FRONTMAN 1168  
ALICIA 6198 LAR

SSR PAYWEIGHT 704E  
MED ROCK MISS PAYWEIGHT 158  
MED ROCK MAGGIE COMRADE 674

EPDS		
	SIRE	DAM
BW	-0.9	+1.7
WW	+64	+58
MILK	+37	+27
YW	+115	+109
DAM PDM		
BW	1/83	
WEAN	1/95	

GED EPD	BIRTH WT	EPD	WEANING 205 EPD	YEARLING 365 EPD	MILK EPD	\$M	\$W	SC CM
+6	83	+1.8	690	+56	1024	+105	+31	75 54 34.0

**MED ROCK 89**

**MED ROCK LINEBRED 318**

Bull - Born 3/27/23 Tag 174 Reg. #20927909

C C A UNO 049  
MCD UNO 808  
MCD-1 POWERESS 329

MCD UNO 808  
MED ROCK BLACK UNO MLM 174  
MED ROCK BLACK ROSE MLM 997

EPDS		
	SIRE	DAM
BW	+0.9	-0.1
WW	+56	+57
MILK	+34	+28
YW	+93	+100
DAM PDM		
BW	1/65	
WEAN	1/105	

GED EPD	BIRTH WT	EPD	WEANING 205 EPD	YEARLING 365 EPD	MILK EPD	\$M	\$W	SC CM
+10	65	-1.6	653	+56	960	+89	+33	86 63 34.0

**MED ROCK 86**

**MED ROCK GOLD FRONT 377**

Bull - Born 3/19/23 Tag 127 Reg. #20927910

A A R FRONTMAN 3132  
LEES FRONTMAN 1168  
ALICIA 6198 LAR

SITZ RESILIENT 10208  
MED ROCK GOLD RESILIENT 127  
MED ROCK GOLD SPRINT 3015

EPDS		
	SIRE	DAM
BW	-0.9	+1.3
WW	+64	+52
MILK	+37	+24
YW	+115	+95
DAM PDM		
BW	1/73	
WEAN	1/104	

GED EPD	BIRTH WT	EPD	WEANING 205 EPD	YEARLING 365 EPD	MILK EPD	\$M	\$W	SC CM
+8	73	+0.3	624	+66	1010	+118	+30	72 61 34.0

