

Ekalaka Montana

MEDICINE ROCKS

ANGUS RANCH



APRIL 26TH 2024
Lunch at Noon, Sale at 1:00

Bowman Livestock Marketing, Bowman ND

SELLING 85 head of bulls | 85 head of commercial heifers
WITH LONGEVITY, GOOD UDDERS AND STRUCTURE IN MIND,
TO HELP OUR CUSTOMERS MAKE A PROFIT.

*It's not just about pounds...
it's about efficient pounds*

FEATURING SONS OF

Kphu 4055 | Med Rock Beaver Creek 628 | Sitz Reload 411C
B Bar Blackmass 4907 | Paramount Ambush 2172

BID ONLINE AT:



MEDICINE ROCKS RANCH

PRODUCTION SALE

Friday April 26, 2024 1p.m.

Bowman Livestock Marketing, Bowman, ND

Selling

85 Yearling Angus Bulls
85 Replacement Commercial Heifers

Auctioneer:

Joe Goggins 406-373-6844 • Cell 406-861-5664

Telephone Bidding:

If you would like to bid via telephone contact
Kelly Spring at 406-740-0523 or any of the Sale Representatives.

Sale Representatives:

Ryan Casteel..... Cattle Business Weekly .. 605-423-6000
Wrye Williams Tri-State Livestock News 406-938-3071
Scott Bachmeier.... Dakota Prairie Outdoors . 701-425-6651
Kurt Kangas American Angus Assoc.... 406-366-4190

Terms & Conditions:

Cattle sell under the terms and conditions as suggested by the
American Angus Association effective June 4, 2020.

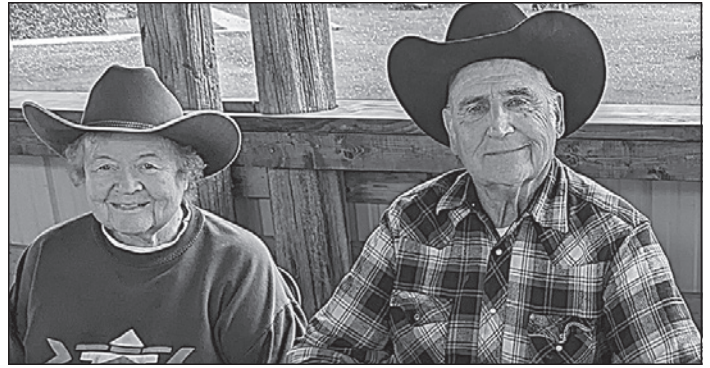
Bull Delivery:

Will deliver for free within 300 mile radius of Ekalaka, MT.
For distances greater than 300 miles, please make arrange-
ments to split costs for delivery or notify us of your plans.

Please Join Us for Lunch at 12:00 Noon

Sale Day Phone:
1-877-211-0600

email: medicine_rocks_ranch@hotmail.com
website: www.medicinerocksranh.com



Frank and Charlene Mehling

Greetings, fellow livestock producers,

We wish to invite you to our annual yearling bull and commercial heifer sale that will be held **Friday, April 26, 2024 at Bowman Livestock Marketing, Bowman, North Dakota.** The bulls have wintered at **Midland Bull Test at Columbus, Montana** again and will arrive at Bowman on **Tuesday, April 23.** You are invited to view them at Columbus before they depart or view at Bowman before the sale. The bulls were with their dams on pasture with no extra feed until mid- November when they were moved to Columbus. They are well grown but absolutely not overgrown and in condition to survive the coming breeding season.

Eighty-five head of commercial heifers will arrive for the sale. They have been either at Sarlsands in Golva, ND or here at the ranch on pasture with hay and lick tanks. Some of the heifers are from our commercial Angus herd and are bred Hereford and result in a set of very fancy F1 cross baldies.

We want to know what our genetics and our cows are capable of with what our pastures provide without the help of extra supplements. We believe in a no-BS culling - if you don't make the grade, you don't make the grade when it comes to our mothers and our bull calves.

All bulls and heifers have had veterinary recommended shots. Bulls have had a breeding soundness evaluation including a semen test before the sale. All bulls sold on sale day are ready for service. The first breeding season guarantee is explained on the opposite page. **If within 10 days of the sale** you find the bull's disposition unsuitable, we will replace him or refund in full if we don't have a replacement.

Supplemental data will be available, as it's provided by the Angus Association, on our website and facebook page.

If you haul your bull home yourself sale day there will be a discount of \$100.00. Heifer transport is the responsibility of the new owner, but we would be happy to help arrange transport if needed.

We are reserving 1/3 revenue sharing semen interest in all bulls sold. The purchaser owns the bull and his entire salvage, but if semen is sold we will have a share. If we desire to collect a bull we would like to pick him up and return him at the customer's convenience.

Thank you **Leo and Sam McDonnell** and **Steve and Amy Williams** and crew for feeding the bulls and to **Brian and Susan Sarlsand** for feeding the heifers. **Bonnie from A2Z Printing** does a wonderful job with our catalog preparations. **Joe Goggins**, thank you so much for helping us find new homes for these cattle.

Many thanks also to **our neighbors** for your most willing help throughout the year when we need to work cattle and do other ranch work. Also, thank you to **Kellen McCalmont** for the continued help for a few years and to both **Kellen and Levi Joyce** for the calving help. We also receive a lot of assistance from **Jonathan and Rachel Deford** and family. Of course, thank you to **Paul and Michelle Mehling** and **Marcia Monforton** for your love and support. **Paul and Michelle** are here for us at any time.

We wish to thank our customers for your past support of our program. May our Lord bless you all.

The Mehling Family

MEDICINE ROCKS RANCH
FRANK and CHARLENE MEHLING
406-775-6478

email: medicine_rocks_ranch@hotmail.com
1021 Hwy 7, Baker, MT 59313

SPRING ANGUS
KELLY and TOREY SPRING
406- 775-8835

email: springranch17@gmail.com
70 Chalk Buttes Rd, Ekalaka, MT 59324



- LIVE SALE BROADCAST -

This sale will be broadcast live on www.frontierlivesale.com.

To view the sale:

1. Create an account, if you have already done so skip next step. To create a new account, click on the word **Registration** in the upper right hand corner. You must fill out the information requested. Then click **Create Account**. An

email will be sent to your email account you provided. Please click the link in the email to activate your new account.

2. Once you click the link, your account will now be activated.

3. At this point, you may click **Continue To Browse Our Site**. This will allow you to view all upcoming auctions.

4. Once you see the auction you are interested in, click **Get Approved To Bid** - absentee and live bidding.

5. Please enter your information in the form. Depending on the auctioneer, different information may be requested. Click **I agree to sale terms and conditions**. Congratulations! You are now approved for the auction. Now that you're approved you can participate in the auction and bid on its' items.

5. Login on sale day with the credentials provided at registration.

Call 866-313-0123 for tech help.



- FIRST BREEDING SEASON GUARANTEE -



All bulls selling for \$3,000.00 or more will be covered 50% of original purchase price by Medicine Rocks Ranch if they are injured during their first breeding season. Breeding season is defined as the 90-day period following the first turnout of the bulls. Please notify us as soon as possible should any injury occur and prior to the bull being sold for salvage.

All salvage value will be retained by new owner.

Example 1: A \$10,000 bull is injured, a credit of \$5,000 will be given to the buyer.

Example 2: A \$5,000 bull is injured, a credit of \$2,500 will be given to the buyer.

Example 3: A \$3,000 bull is injured, a credit of \$1,500 will be given to the buyer.

- REFERENCE SIRE -



BS BIG DIESEL S861

Bull - Born 3/04/21 - Reg. 20275075

DL DIESEL
DL DUALLY
DL RUBY 496

DL SONIC 444
DL INCENTIVE 2103
DL FINAL GRANDVIEW 53
DL RUBY 1491

TOUR WITH SINKS ANGUS S116
R B TOUR OF DUTY 177
MISS BAR SY PEARL S122

WERNER WAR PARTY 2417
B A LADY 6807 305
MSAR MR PACKER 2018
MISS BS BUSH 471 S109

EPD's	CED	BW	WW	Milk	YW	MARB	RE	FAT
EPD	+4	+2.2	+70	+22	+124	1+.45	1+.58	1+.013
ACC	.19	.36	.32	.14	.28	.05	.05	.05



"S A V RESOURCE 1441" - SIRE OF MED ROCK RESOURCE 112



LEES FRONTMAN 1168

Bull - Born 3/25/21 - Reg. *20280937

A A R FRONTMAN 3132
APEX FRONTMAN 081
A A R BLACKBIRD 9044

KESSLERS FRONTMAN R001
APEXETTE PRIDE 9067
B C MATRIX 4132
A A R BLACKBIRD 7026

ALICIA 6198 LAR
EXAR UPSHOT 0562B
ALICIA 801 LAR

SITZ UPWARD 307R
EXAR BARBARA T020
CROOK MT REALLY WINDY 141
ALICIA 41-93 603 LAR

EPD's	CED	BW	WW	Milk	YW	MARB	RE	FAT
EPD	+10	-9	+64	+37	+115	+.34	+.28	+.048
ACC	.33	.50	.43	.33	.38	.33	.33	.28



MED ROCK RESOURCE 112

Bull - Born 3/08/21 - Reg. 20314362

S A V RESOURCE 1441
RITO 707 OF IDEAL 3407 7075
S A V BLACKCAP MAY 4136

R R RITO 707
IDEAL 3407 OF 1418 076
S A V 8180 TRAVELER 004
S A V MAY 2397

MED ROCK MARRI BART 646
BARTELS 4925 IF 440 718
MED ROCK MARRI 702 985

CONNELLY IN FOCUS 4925
ELISHA OF CONANGA 868 988
B C MID EMBLAZON 854E 702
MED ROCK MARRI CR 503

EPD's	CED	BW	WW	Milk	YW	MARB	RE	FAT
EPD	+7	+.8	+63	+20	+113			
ACC	.23	.37	.32	.22	.28			

- REFERENCE SIRES -



"SITZ RELOAD 411C" - SIRE OF MED ROCK RELOAD CONTRAST 949

MED ROCK REF SIRE
MED ROCK RELOAD CONTRAST 949
 Bull - Born 3/23/19 - Reg. 19695273-DDP-M1P-OHP

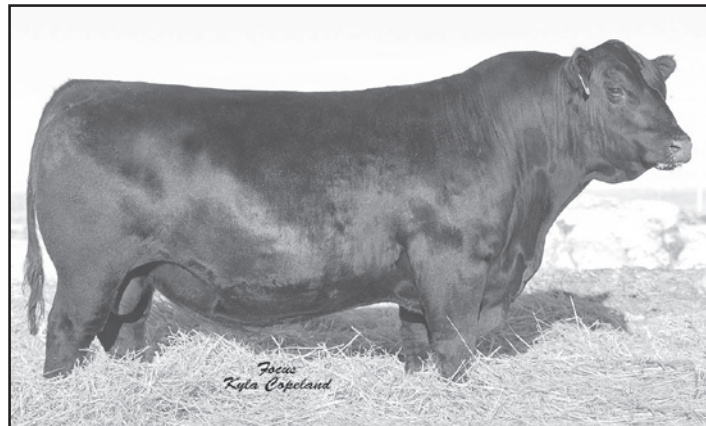
S A V RESOURCE 1441
SITZ RELOAD 411C
 SITZ FOREVER LADY 612T

RITO 707 OF IDEAL 3407 7075
 S A V BLACKCAP MAY 4136
 CONNEALY THUNDER
 SITZ FOREVER LADY 63M

MED ROCK CONTRAST 702 091
MED ROCK PEGGY CONTRAST 226
 MED ROCK X PEGGY 017

CONNEALY CONTRAST
 MED ROCK GALA 702 892
 VERMILION X FACTOR
 MED ROCK PEGGY VISEGRIP 318

EPD's	CED	BW	WW	Milk	YW	MARB	RE	FAT
EPD	-6	+5.3	+64	+30	+133	1+.28	1+.48	1+.022
ACC	.27	.49	.43	.22	.35	.05	.05	.05



"BASIN PAYWEIGHT 1682" - SIRE OF SSR PAYWEIGHT 704E

MED ROCK REF SIRE
SSR PAYWEIGHT 704E
 Bull - Born 3/18/17 - Reg. 18766417

BASIN PAYWEIGHT 006S
BASIN PAYWEIGHT 1682
 21AR O LASS 7017

VERMILION PAYWEIGHT J847
 BASIN LUCY 3829
 HARB PENDLETON 765 J H
 21AR O LASS F24A

CONNEALY EARNAN 076E
SSR EVANGELINE 478B
 SSR EVANGELINE 206

CONNEALY CONSENSUS
 BRAZILA OF CONANGA 3991 839A
 SSR TROOPER 117
 LAFLIN'S SAVANNAH GAIL 5256

EPD's	CED	BW	WW	Milk	YW	MARB	RE	FAT
EPD	+3	+1.7	+62	+27	+120	+38	+41	+031
ACC	.27	.51	.44	.23	.33	.23	.26	.23



MED ROCK REF SIRE
SITZ RELOAD 411C
 Bull - Born 2/04/15 - Reg. +*18250419
 AMF-CAF-D2F-DDF-M1F-NHF-OHF-OSF-RDF

RITO 707 OF IDEAL 3407 7075
S A V RESOURCE 1441
 S A V BLACKCAP MAY 4136

R R RITO 707
 IDEAL 3407 OF 1418 076
 S A V 8180 TRAVELER 004
 S A V MAY 2397

CONNEALY THUNDER
SITZ FOREVER LADY 612T
 SITZ FOREVER LADY 63M

BALDRIDGE KABOOM K243 KCF
 PARKA OF CONANGA 241
 TRAVELER 124 G D A R
 LUKENS FOREVER LADY J463

EPD's	CED	BW	WW	Milk	YW	MARB	RE	FAT
EPD	+6	-5	+54	+35	+113	+31	+43	+036
ACC	.71	.85	.85	.76	.85	.61	.57	.61



MED ROCK REF SIRE
MED ROCK BEAVER CREEK 628
 Bull - Born 3/14/16 - Reg. 18741471

RITO 707 OF IDEAL 3407 7075
S A V RECHARGE 3436
 S A V BLACKCAP MAY 4136

R R RITO 707
 IDEAL 3407 OF 1418 076
 S A V 8180 TRAVELER 004
 S A V MAY 2397

RITO 616 OF 4B20 6807
MED ROCK 707 616 071
 MED ROCK TIGRE 905 707

D H D TRAVELER 6807
 RITA 4B20 OF 0FB1 BANDO
 TIGRE GRANDE P515 160 S H F
 MED ROCK ENCHANTRESS 905

EPD's	CED	BW	WW	Milk	YW	MARB	RE	FAT
EPD	+6	+0	+51	+20	+90	+09	+62	-.014
ACC	.46	.79	.74	.32	.60	.28	.33	.30

Beaver Creek is a deep-ribbed, big-hipped, good-footed, calving ease, scale-crushing, wide-topped bull - all in a moderate frame. Truly the Cattleman's kind! He is the last calf that Med Rock 707 616 071 produced in her "no - miss career". She was a true matriarch in the Medicine Rocks herd. Beaver Creek's dam had a mature weight of 1175 lbs., a perfect udder at 16 years of age, impeccable feet, and consistently weaned calves well above average (15 = WW Ratio 110). His paternal grand dam SAV BLACKCAP MAY 4136 is possibly the best cow to ever enter the Schaff Angus flush pen. When the cow is the backbone of your operation, remember, good cows run deep in Beaver Creek.

- REFERENCE SIRES -



PARAMONT AMBUSH 2172

Bull - Born 2/06/82 - Reg. 10239760
AMF-CAF-DDF-M1F-NHF-OHF-OSF



BANDOLIER ESTON G V 21X
BANDOLIER ESTON DURNES 42B
GLENDODDIE BURGESS BARDELLA

ABANGOMERE ESTON
ROSE G V 17M
BANDOLIER OF SKILLYMARN0 2
EASTERN MISS BURGESS

SCHEARBROOK SHOSHONE
E W S MISS BURGESS 1720
CHOICY OF HILLENDALE 44

BEAUFORT OF WYE
SHOSHONE BLACKBIRD
CHOICY OF WYE
ELEVATE OF HILLENDALE 1

EPD's	CED	BW	WW	Milk	YW	MARB	RE	FAT
EPD	-3	+7	+26	+23	+41	+39	+10	-.012
ACC	.95	.98	.97	.96	.97	.92	.90	.91

Paramont Ambush 2172 is a throw back to over 30 years ago. He is a foundation sire for many of today's greatest bloodlines. His daughters are his greatest legacy with their excellent maternal characteristics and proven longevity.



KPHU 4055

Bull - Born 12/26/13 - Reg. 17895135-DDF-OSF

HOOVER DAM
MUSGRAVE BOULDER
MILL BRAE SA JAUNTY 3079

SYDGEN C C & 7
ERICA OF ELLSTON C124
SITZ ALLIANCE 6595
MILL BRAE EXT JAUNTY 8068

LAGRAND PREDESTINED 7316
KPHU 1056
LAGRAND KATINKA 6150

G A R PREDESTINED
BAAR USA PRIMROSE 4061
G 13 STRUCTURE
BON VIEW KATINKA 1346

EPD's	CED	BW	WW	Milk	YW	MARB	RE	FAT
EPD	+8	+1.1	+59	+25	+103	+57	+67	+0.002
ACC	.52	.80	.76	.39	.59	.39	.38	.37



B BAR BLACK MASS 4907

Bull - Born 3/24/17 - Reg. 18823270

B BAR WINDY 79
B BAR BLACK MASS 3045
B BAR QUEEN 304

CROOK MT REALLY WINDY 141
B BAR LADY JEWEL 116
SITZ RLS ALLIANCE 7164
B BAR QUEEN 557

PRA FRONT RUNNER 108
B BAR LADY JEWEL 490
B BAR LADY JEWEL 285

B BAR FRONTRUNNER 2616
PRA ETHELDA TOM 9177
R A 424 LEAD ON Z129
B BAR LADY JEWEL 1190

EPD's	CED	BW	WW	Milk	YW	MARB	RE	FAT
EPD	+9	-1.3	+62	+30	+104	+23	+86	+0.005
ACC	.33	.68	.63	.24	.50	.16	.20	.17



TEX PLAYBOOK 5437

Bull - Born 8/03/15 - Reg. 18414912

AMF-CAF-D2F-DDF-M1F-NHF-OHF-OSF-RDF

BASIN PAYWEIGHT 0065
BASIN PAYWEIGHT 1682
21AR O LASS 7017

VERMILION PAYWEIGHT J847
BASIN LUCY 3829
HARB PENDLETON 765 J H
21AR O LASS F24A

SUMMITCREST COMPLETE 1P55
RITA 1C43 OF 9M26 COMPLETE
RITA 9M26 OF RITA 5F56 PRED

C F RIGHT DESIGN 1802
SUMMITCREST ELBA 1M17
G A R PREDESTINED
RITA 5F56 OF 1198 FD

EPD's	CED	BW	WW	Milk	YW	MARB	RE	FAT
EPD	+12	-0.1	+60	+36	+104	+60	+36	+0.029
ACC	.90	.97	.96	.90	.94	.64	.61	.64



PYRAMID 8186 1222

Bull - Born 4/17/11 - Reg. 17111498

AMF-CAF-DDF-NHF-OSF-RDF

S A V NET WORTH 4200
S A V PYRAMID 8186
S A V BLACKBIRD 5296

S A V 8180 TRAVELER 004
S A V MAY 2410
BOYD NEW DAY 8005
S A V BLACKBIRD 1082

SITZ ALLIANCE 6595
SUMMIT GINA 76
SUMMIT GINA 441

SITZ TRAVELER 8180
SITZ BARBARAMERE JET 2698
LEACHMAN RIGHT TIME
SUMMIT GINA 277

EPD's	CED	BW	WW	Milk	YW	MARB	RE	FAT
EPD	-3	+2.7	+57	+29	+103	+38	+15	+0.072
ACC	.42	.69	.74	.50	.43	.38	.38	.36

After viewing Pyramids many daughters at Rounds Angus in Union Center SD, with most of his daughters being 8 years old and up we decided it was a no brainer to bring him into our AI program. His daughters are solid footed, have a super disposition, exceptional udders and drag in big calves in the fall.

- YEARLING ANGUS BULLS -



MED ROCK BEAVER MASS 325

Bull - Born 3/23/23 Tag 069 Reg. #20923662

B BAR BLACK MASS 3045
B BAR BLACK MASS 4907
 B BAR LADY JEWEL 490

MED ROCK BEAVER CREEK 628
MED ROCK GOLDY BEAVER 069
 MED ROCK GOLDY COMMAND 776

EPDS		
	SIRE	DAM
BW	-1.3	-0.6
WW	+62	+54
MILK	+30	+22
YW	+104	+95
DAM PDN		
BW	2/72	
WEAN	1/96	



CED EPD	BIRTH WT	BIRTH EPD	WEANING 205	WEANING EPD	YEARLING 365	YEARLING EPD	MILK EPD	\$M	\$W	SC CM
I+9	78	I-1.0	627	I+58	1031	I+100	I+26	79	56	36.0



MED ROCK BLACK POWER 327

Bull - Born 4/01/23 Tag 679 Reg. #20924065

B BAR BLACK MASS 3045
B BAR BLACK MASS 4907
 B BAR LADY JEWEL 490

PA POWER TOOL 9108
MED ROCK POWER SAGE 679
 MED ROCK SAGE DB 679

EPDS		
	SIRE	DAM
BW	-1.3	-0.6
WW	+62	+38
MILK	+30	+27
YW	+104	+87
DAM PDN		
BW	2/86	
WEAN	2/102	



MED ROCK BLACK CREEK 352

Bull - Born 3/18/23 Tag 0027 Reg. #20908003

B BAR BLACK MASS 3045
B BAR BLACK MASS 4907
 B BAR LADY JEWEL 490

MED ROCK BEAVER CREEK 628
MED ROCK ULA CREEK 0027
 MED ROCK ULA 407

EPDS		
	SIRE	DAM
BW	-1.3	+1.4
WW	+62	+60
MILK	+30	+24
YW	+104	+104
DAM PDN		
BW	2/78	
WEAN	1/112	

CED EPD	BIRTH WT	BIRTH EPD	WEANING 205	WEANING EPD	YEARLING 365	YEARLING EPD	MILK EPD	\$M	\$W	SC CM
I+7	84	I+0.1	729	I+61	1151	I+105	I+27	83	63	35.0



MED ROCK BLACK COMRADE 353

Bull - Born 3/21/23 Tag 716 Reg. #20908004

B BAR BLACK MASS 3045
B BAR BLACK MASS 4907
 B BAR LADY JEWEL 490

CONNELLY COMRADE 1385
MED ROCK SASSY COM 716
 MED ROCK SASSY BB823

EPDS		
	SIRE	DAM
BW	-1.3	-1.5
WW	+62	+36
MILK	+30	+29
YW	+104	+66
DAM PDN		
BW	3/79	
WEAN	3/102	



MED ROCK PROFICIENT MASS 324

Bull - Born 3/26/23 Tag 326 Reg. #20907983

B BAR BLACK MASS 3045
B BAR BLACK MASS 4907
 B BAR LADY JEWEL 490

ROCK'N D PROFICIENT 2915
MED ROCK PROFICIENT BIRD 326
 MED ROCK BIRDIE 1020

EPDS		
	SIRE	DAM
BW	-1.3	+2.2
WW	+62	+53
MILK	+30	+29
YW	+104	+96
DAM PDN		
BW	6/92	
WEAN	6/104	

CED EPD	BIRTH WT	BIRTH EPD	WEANING 205	WEANING EPD	YEARLING 365	YEARLING EPD	MILK EPD	\$M	\$W	SC CM
I+10	90	I-1.4	677	I+49	1103	I+86	I+29	92	56	38.0

CED EPD	BIRTH WT	BIRTH EPD	WEANING 205	WEANING EPD	YEARLING 365	YEARLING EPD	MILK EPD	\$M	\$W	SC CM
I+4	88	I+0.5	705	I+58	979	I+101	I+29	75	65	34.0



Hello everyone!

First of all, thank you for your interest in our program.

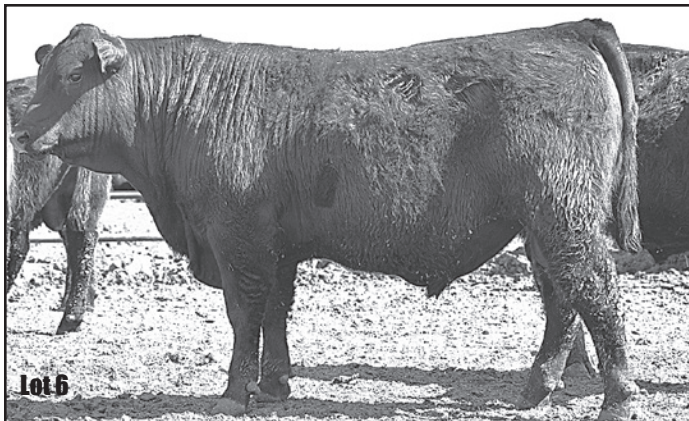
We believe the cow is key. You cannot develop the "perfect" bull if you are not initially impressed by the cow. Our ideal cows are the ones that calve on their own, breed back timely each year, and perform well in our environment on limited, to no extra inputs while bringing in a big healthy calf each fall. We ask our cows to graze 10+ months of the year whenever possible. The cows need to be out working to find the best forage available and stay in good flesh. Of course the cow needs to meet our physical standards (moderate frame size, feminine head, expansive rib, adequate hip). She also needs to exhibit great maternal instincts the moment the calf hits the ground, yet be docile enough to let us tag and weigh her calf. With the built-in convenience traits (udder quality, fleshing ability, structural correctness, sound feet) of our herd and the proven females behind the sires we chose to use, we believe you can find confidence in our bulls.

Our bulls are fed enough to get a test of feedlot performance, but we absolutely will not push them to the point of harming their long-term structural development. The bulls have been in a pasture, have had plenty of exercise, and are ready to cover cows while remaining in decent flesh. We acknowledge fat bulls sell and we could probably make more money by pushing our bulls, but we refuse to hinder the long-term value of many years of breeding service. This year the bulls were developed

at Rounds Angus in South Dakota. Rounds do a great job of developing the bulls with a ration of free choice hay, Bull grower Canola, and Purina Ultimate Breeder 8 mineral. We believe customer satisfaction is paramount to our success! We strive for the type of cattle that will last, but in the case that one does not, we want to make it right. If you ever have a problem with one of our bulls let us know ASAP so we can make it right.

We would like to give a big heartfelt thank you to our friends, family, and neighbors for their help throughout the year and their support of our program. We couldn't do this without you!

Kelly, Torey, Oakley, Calgary, and Rogue Spring



MED ROCK LOT 9 MED ROCK BLACK POWER MAS 334
 Bull - Born 3/20/23 Tag 535 Reg. #20907989

B BAR BLACK MASS 3045
B BAR BLACK MASS 4907
 B BAR LADY JEWEL 490

PA POWER TOOL 9108
MED ROCK SA MISS POWER 535
 MED ROCK SA CAL 807

	EPDS	
	SIRE	DAM
BW	-1.3	+0.6
WW	+62	+60
MILK	+30	+33
YW	+104	+99
DAM PDN		
BW	6/76	
WEAN	6/104	

CEP	BIRTH	WEANING	YEARLING	MILK	\$M	\$W	SC			
EPD	WT	205	365	EPD	EPD	EPD	CM			
I+8	82	I-0.4	712	I+61	1095	I+102	I+31	86	69	38.0

MED ROCK LOT 6 MED ROCK MLM BLACK MASS 371
 Bull - Born 3/25/23 Tag M029 Reg. #20908016

B BAR BLACK MASS 3045
B BAR BLACK MASS 4907
 B BAR LADY JEWEL 490

MCD 3545 861
MED ROCK UNO ROSE MLM 029
 MED ROCK ROSIE CASH MLM 804

	EPDS	
	SIRE	DAM
BW	-1.3	+4.1
WW	+62	+79
MILK	+30	+31
YW	+104	+124
DAM PDN		
BW	1/86	
WEAN	1/121	

CEP	BIRTH	WEANING	YEARLING	MILK	\$M	\$W	SC			
EPD	WT	205	365	EPD	EPD	EPD	CM			
I+3	86	I+1.4	786	I+71	1197	I+115	I+30	93	74	33.0

MED ROCK LOT 10 MED ROCK HULA MASS 337
 Bull - Born 4/03/23 Tag 043 Reg. #20907992

B BAR BLACK MASS 3045
B BAR BLACK MASS 4907
 B BAR LADY JEWEL 490

KPHU 4055
MED ROCK LUCI HULA 043
 MED ROCK LUCI FACTOR 072

	EPDS	
	SIRE	DAM
BW	-1.3	+2.4
WW	+62	+61
MILK	+30	+24
YW	+104	+107
DAM PDN		
BW	2/78	
WEAN	1/95	

CEP	BIRTH	WEANING	YEARLING	MILK	\$M	\$W	SC			
EPD	WT	205	365	EPD	EPD	EPD	CM			
I+7	78	I+0.6	634	I+62	1056	I+106	I+27	79	55	37.0

MED ROCK LOT 7 MED ROCK MASS PERFORMER 373
 Bull - Born 3/20/23 Tag 960 Reg. #20920851

B BAR BLACK MASS 3045
B BAR BLACK MASS 4907
 B BAR LADY JEWEL 490

FISCHER PERFORMER 739
MED ROCK BECKI PERFORMER 960
 MED ROCK BECKI POWER 775

	EPDS	
	SIRE	DAM
BW	-1.3	+0.5
WW	+62	+51
MILK	+30	+27
YW	+104	+95
DAM PDN		
BW	1/80	
WEAN	1/102	

CEP	BIRTH	WEANING	YEARLING	MILK	\$M	\$W	SC
EPD	WT	205	365	EPD	EPD	EPD	CM
80		635	1142			56	43.5

MED ROCK LOT 11 MED ROCK BLACK HULA MASS 341
 Bull - Born 3/30/23 Tag 051 Reg. #20907996

B BAR BLACK MASS 3045
B BAR BLACK MASS 4907
 B BAR LADY JEWEL 490

KPHU 4055
MED ROCK JANA HULA 051
 MED ROCK JANA 2915 3018

	EPDS	
	SIRE	DAM
BW	-1.3	+2.6
WW	+62	+58
MILK	+30	+27
YW	+104	+106
DAM PDN		
BW	2/79	
WEAN	1/104	

CEP	BIRTH	WEANING	YEARLING	MILK	\$M	\$W	SC			
EPD	WT	205	365	EPD	EPD	EPD	CM			
I+5	83	I+0.7	682	I+60	1091	I+106	I+28	78	58	35.0

MED ROCK LOT 8 MED ROCK UNO MASS 376
 Bull - Born 3/18/23 Tag 057 Reg. #20908019

B BAR BLACK MASS 3045
B BAR BLACK MASS 4907
 B BAR LADY JEWEL 490

MCD UNO 728
MED ROCK UNO SPRINTRESS 057
 MED ROCK SPRINTRESS 141

	EPDS	
	SIRE	DAM
BW	-1.3	+2.4
WW	+62	+63
MILK	+30	+27
YW	+104	+104
DAM PDN		
BW	2/78	
WEAN	2/101	

CEP	BIRTH	WEANING	YEARLING	MILK	\$M	\$W	SC			
EPD	WT	205	365	EPD	EPD	EPD	CM			
I+7	83	I+0.6	628	I+63	1001	I+105	I+28	80	58	36.0

MED ROCK LOT 12 MED ROCK BLACK HULA 345
 Bull - Born 3/28/23 Tag 031 Reg. #20907998

B BAR BLACK MASS 3045
B BAR BLACK MASS 4907
 B BAR LADY JEWEL 490

KPHU 4055
MED ROCK BECKY HULA 031
 MED ROCK BECKY CHARGE 6023

	EPDS	
	SIRE	DAM
BW	-1.3	+0.4
WW	+62	+55
MILK	+30	+23
YW	+104	+96
DAM PDN		
BW	2/80	
WEAN	1/105	

CEP	BIRTH	WEANING	YEARLING	MILK	\$M	\$W	SC			
EPD	WT	205	365	EPD	EPD	EPD	CM			
I+8	83	I-0.5	673	I+59	1077	I+101	I+26	83	59	37.0



MED ROCK BLACK SPRINT 302

Bull - Born 3/19/23 Tag 673 Reg. #20907967

B BAR BLACK MASS 3045
B BAR BLACK MASS 4907
 B BAR LADY JEWEL 490

BOVAGENE SPRINT OF LCR
MED ROCK LUCY SPRINT 673
 MED ROCK LUCY SA 161

EPDS		
	SIRE	DAM
BW	-1.3	+3.3
WW	+62	+48
MILK	+30	+91
YW	+104	+22
DAM PDN		
BW	4/87	
WEAN	4/98	

CED EPD	BIRTH WT	EPD	WEANING 205 EPD	YEARLING 365 EPD	MILK EPD	\$M	\$W	SC CM
+4	88	+1.0	618	+56	1000	+98	+26	73 51 40.0



MED ROCK COOL BLACK 306

Bull - Born 3/28/23 Tag 943 Reg. #20907970

B BAR BLACK MASS 3045
B BAR BLACK MASS 4907
 B BAR LADY JEWEL 490

MED ROCK BEAVER CREEK 628
MED ROCK SPRINT CREEK 943
 MED ROCK CEDAR SPRINT 694

EPDS		
	SIRE	DAM
BW	-1.3	-0.1
WW	+62	+51
MILK	+30	+23
YW	+104	+92
DAM PDN		
BW	1/86	
WEAN	1/99	

CED EPD	BIRTH WT	EPD	WEANING 205 EPD	YEARLING 365 EPD	MILK EPD	\$M	\$W	SC CM
86			685	941			57	37.0



MED ROCK BLACK SIRE 323

Bull - Born 3/25/23 Tag 720 Reg. #20907982

B BAR BLACK MASS 3045
B BAR BLACK MASS 4907
 B BAR LADY JEWEL 490

VAR CASH 547
MED ROCK GALA CASH 720
 MED ROCK GALA COALITION 4026

EPDS		
	SIRE	DAM
BW	-1.3	+1.8
WW	+62	+60
MILK	+30	+28
YW	+104	+112
DAM PDN		
BW	2/81	
WEAN	2/102	

CED EPD	BIRTH WT	EPD	WEANING 205 EPD	YEARLING 365 EPD	MILK EPD	\$M	\$W	SC CM
+6	78	+0.3	650	+61	1034	+109	+29	73 58 37.0



SPRING SPHINX 307

Bull - Born 3/10/23 Tag S307 Reg. #20908556

S A V PYRAMID 8186
PYRAMID 8186 1222
 SUMMIT GINA 76

VDAR SONNY BOY 7876
PROUD ERICA 18-604
 PROUD ERICA 16-059

EPDS		
	SIRE	DAM
BW	+2.7	+0.5
WW	+58	+46
MILK	+29	+25
YW	+103	+81
DAM PDN		
BW	4/75	
WEAN	4/102	

CED EPD	BIRTH WT	EPD	WEANING 205 EPD	YEARLING 365 EPD	MILK EPD	\$M	\$W	SC CM
+7	79	+1.3	630	+57	1052	+98	+27	43 54 39.0

Should work on larger framed heifers and cows. 307 has been a stand out from birth and is backed by a very nice dam.



SPRING MONOLITH 317

Bull - Born 3/19/23 Tag S317 Reg. #20908560

S A V PYRAMID 8186
PYRAMID 8186 1222
 SUMMIT GINA 76

1441 RESOURCE 6804 RS
DAKOTA BLACKBIRD 17-161
 DAKOTA BLACKBIRD 11-902

EPDS		
	SIRE	DAM
BW	+2.7	+0.6
WW	+58	+41
MILK	+29	+22
YW	+103	+75
DAM PDN		
BW	5/78	
WEAN	5/95	

CED EPD	BIRTH WT	EPD	WEANING 205 EPD	YEARLING 365 EPD	MILK EPD	\$M	\$W	SC CM
+5	82	+1.6	664	+59	1130	+102	+25	55 54 37.4

Should work on larger framed heifers and cows.



SPRING PYRAMID SCHEME 305

Bull - Born 3/10/23 Tag S305 Reg. #20908555

S A V PYRAMID 8186
PYRAMID 8186 1222
 SUMMIT GINA 76

MED ROCK EMBLAZON CC MLM 778
SPRING FOREVER BLAZE 900
 MED ROCK FOREVER WEIGHT 536

EPDS		
	SIRE	DAM
BW	+2.7	-1.3
WW	+58	+48
MILK	+29	+25
YW	+103	+86
DAM PDN		
BW	3/77	
WEAN	3/99	

CED EPD	BIRTH WT	EPD	WEANING 205 EPD	YEARLING 365 EPD	MILK EPD	\$M	\$W	SC CM
+7	75	-.3	570	+52	952	+92	+27	62 51 37.2

Recommend for heifers.



SPRING PRISM 309

Bull - Born 3/10/23 Tag S309 Reg. #20908557

S A V PYRAMID 8186
PYRAMID 8186 1222
 SUMMIT GINA 76

CENTENNIAL SUPREME 312
EULIMA 16-475
 WESTERN EULIMA 14-924

EPDS		
	SIRE	DAM
BW	+2.7	-0.7
WW	+58	+50
MILK	+29	+20
YW	+103	+73
DAM PDN		
BW	6/72	
WEAN	6/95	

CED EPD	BIRTH WT	EPD	WEANING 205 EPD	YEARLING 365 EPD	MILK EPD	\$M	\$W	SC CM
+4	79	+1.1	501	+47	914	+79	+24	56 44 33.8

Should work on heifers.



SPRING CRYPT 312

Bull - Born 3/11/23 Tag S312 Reg. #20908558

S A V PYRAMID 8186
PYRAMID 8186 1222
 SUMMIT GINA 76

B BAR BLACK MASS 4907
SPRING MONA LUND 019
 MED ROCK EL MONA KS 3020

EPDS		
	SIRE	DAM
BW	+2.7	-0.4
WW	+58	+59
MILK	+29	+32
YW	+103	+92
DAM PDN		
BW	2/78	
WEAN	2/109	

CED EPD	BIRTH WT	EPD	WEANING 205 EPD	YEARLING 365 EPD	MILK EPD	\$M	\$W	SC CM
+5	74	-.2	571	+54	1033	+90	+30	64 57 36.2

Should work on heifers.



LOT 21

Bull - Born 3/13/23 Tag S314 Commercial

S A V PYRAMID 8186
PYRAMID 8186 1222
SUMMIT GINA 76

MED ROCK EMBLAZON CC MLM 778
SPRING BLAZE 903
SPRING 503

EPDS		
SIRE	DAM	
BW	+2.7	
WW	+58	
MILK	+29	
YW	+103	
DAM PDN		
BW		
WEAN		

CED EPD	BIRTH WT	EPD	WEANING 205	EPD	YEARLING 365	EPD	MILK EPD	\$M	\$W	SC CM
	82		600		970					32.0

Cow bull.



LOT 25

MED ROCK COMMOTION LOAD 360

Bull - Born 3/30/23 Tag M941 Reg. #20920848

SITZ RELOAD 411C
MED ROCK RELOAD CONTRAST 949
MED ROCK PEGGY CONTRAST 226

VAR COMMOTION 650
MED ROCK COMMOTION ROSE 941
MED ROCK MLM ROSE 239

EPDS		
SIRE	DAM	
BW	+5.3	+1.8
WW	+64	+53
MILK	+30	+30
YW	+133	+93
DAM PDN		
BW		1/85
WEAN		1/100

CED EPD	BIRTH WT	EPD	WEANING 205	EPD	YEARLING 365	EPD	MILK EPD	\$M	\$W	SC CM
	85		632		1060				46	35.0



LOT 22

MED ROCK POWER LOAD 380

Bull - Born 3/25/23 Tag 479 Reg. #20908021

SITZ RELOAD 411C
MED ROCK RELOAD CONTRAST 949
MED ROCK PEGGY CONTRAST 226

PA POWER TOOL 9108
MED ROCK POWER BONNIE 479
MED ROCK BONNIE LO 785

EPDS		
SIRE	DAM	
BW	+5.3	+2.2
WW	+64	+45
MILK	+30	+28
YW	+133	+84
DAM PDN		
BW		4/87
WEAN		4/99

CED EPD	BIRTH WT	EPD	WEANING 205	EPD	YEARLING 365	EPD	MILK EPD	\$M	\$W	SC CM
I+3	87	I+3.8	648	I+55	1115	I+109	I+29	84	46	35.0



LOT 26

MED ROCK 949 CONTRAST 368

Bull - Born 3/17/23 Tag 285 Reg. #20908015

SITZ RELOAD 411C
MED ROCK RELOAD CONTRAST 949
MED ROCK PEGGY CONTRAST 226

ROCK'N D PROFICIENT 2915
MED ROCK PRO BEAUTY 285
MED ROCK BEAUTY JR BKST 477

EPDS		
SIRE	DAM	
BW	+5.3	+3.1
WW	+64	+43
MILK	+30	+30
YW	+133	+77
DAM PDN		
BW		8/85
WEAN		8/100

CED EPD	BIRTH WT	EPD	WEANING 205	EPD	YEARLING 365	EPD	MILK EPD	\$M	\$W	SC CM
I-5	82	I+4.2	613	I+54	1012	I+105	I+30	60	39	37.0



LOT 23

MED ROCK PRAIRIE CONT 314

Bull - Born 3/19/23 Tag 6029 Reg. #20907977

SITZ RELOAD 411C
MED ROCK RELOAD CONTRAST 949
MED ROCK PEGGY CONTRAST 226

CONNELLY COMRADE 1385
MED ROCK PRAIRIE COM 6029
MED ROCK PRAIRIE DIAMOND 225

EPDS		
SIRE	DAM	
BW	+5.3	+0.2
WW	+64	+51
MILK	+30	+33
YW	+133	+95
DAM PDN		
BW		4/80
WEAN		4/106

CED EPD	BIRTH WT	EPD	WEANING 205	EPD	YEARLING 365	EPD	MILK EPD	\$M	\$W	SC CM
I+2	87	I+2.8	639	I+58	1058	I+114	I+32	79	49	36.0



"NCC DIXIE ERICA 729" - DAM OF LOT 27



LOT 24

MED ROCK PARTNER 319

Bull - Born 3/23/23 Tag 4013 Reg. #20907980

SITZ RELOAD 411C
MED ROCK RELOAD CONTRAST 949
MED ROCK PEGGY CONTRAST 226

STENBERG COALITION 509
MED ROCK SASSY COAL 4013
MED ROCK SASSY BB823

EPDS		
SIRE	DAM	
BW	+5.3	-0.5
WW	+64	+42
MILK	+30	+26
YW	+133	+65
DAM PDN		
BW		4/85
WEAN		4/95

CED EPD	BIRTH WT	EPD	WEANING 205	EPD	YEARLING 365	EPD	MILK EPD	\$M	\$W	SC CM
I-1	85	I+2.4	598	I+53	1033	I+99	I+28	82	47	



LOT 27

SPRING 308 REVOLVER

Bull - Born 3/10/23 Tag S308 Reg. #20909282

S A V RESOURCE 1441
SITZ RELOAD 411C
SITZ FOREVER LADY 612T

SINCLAIR EMULATION XXP
NCC DIXIE ERICA 729
NCC DIXIE ERICA 3029

EPDS		
SIRE	DAM	
BW	-0.5	+0.4
WW	+54	+46
MILK	+35	+23
YW	+113	+84
DAM PDN		
BW		3/79
WEAN		3/101

CED EPD	BIRTH WT	EPD	WEANING 205	EPD	YEARLING 365	EPD	MILK EPD	\$M	\$W	SC CM
+1	92	+1.7	566	+51	1044	+102	+29	69	48	35.6

308 has an incredible pedigree with some of the best females and female makers in the breed. NCC Dixie Erica 729, dam of 308, is one of our Donor Dams. Herd sire prospect.

SPRING **LOT 28**
ANGUS

SPRING RESTOCK 311

Bull - Born 3/11/23 Tag S311 Reg. #20909281

S A V RESOURCE 1441

SITZ RELOAD 411C

SITZ FOREVER LADY 612T

KPHU 4055

SPRING ADELE HULA 101

MED ROCK OLE ADELE 2000

EPDS		
	SIRE	DAM
BW	-0.5	+1.0
WW	+54	+51
MILK	+35	+27
YW	+113	+89
DAM PDN		
BW	1/66	
WEAN	1/100	

CED EPD	WT	BIRTH EPD	WEANING EPD	YEARLING EPD	MILK EPD	\$M	\$W	SC CM
+9	66	-7	577	+51	980	+99	+31	92 51 31.2

Should work on heifers.



"MED ROCK MLM ROSE 239" - 12 YEAR OLD DAM OF LOT 32

SPRING **LOT 29**
ANGUS

SPRING TACTICAL 313

Bull - Born 3/13/23 Tag S313 Reg. #20909287

S A V RESOURCE 1441

SITZ RELOAD 411C

SITZ FOREVER LADY 612T

C R A BEXTOR 872 5205 608

MED ROCKMONA BEXTOR KS 528

MED ROCK EL MONA KS 3020

EPDS		
	SIRE	DAM
BW	-0.5	+1.4
WW	+54	+51
MILK	+35	+30
YW	+113	+80
DAM PDN		
BW	7/87	
WEAN	7/107	

CED EPD	WT	BIRTH EPD	WEANING EPD	YEARLING EPD	MILK EPD	\$M	\$W	SC CM
+1	96	+2.2	571	+52	1069	+97	+33	74 49 36.0

Cow bull, backed by one of our heaviest WW cow families.

MED ROCK **LOT 32**

MED ROCK LEATHER ROCK 307

Bull - Born 3/19/23 Tag M016 Reg. #20920846

S A V RESOURCE 1441

MED ROCK RESOURCE 112

MED ROCK MARRI BART 646

BIG ROK OLE 450

MED ROCK MLM ROSE 239

MED ROCK ROSE 2021 866

EPDS		
	SIRE	DAM
BW	+0.8	+0.3
WW	+63	+55
MILK	+20	+28
YW	+113	+91
DAM PDN		
BW	7/79	
WEAN	7/101	

CED EPD	WT	BIRTH EPD	WEANING EPD	YEARLING EPD	MILK EPD	\$M	\$W	SC CM
I+6	85	I+1.0	656	I+53	950	I+93	I+27	82 52 35.0

MED ROCK **LOT 30**

MED ROCK BLACK RESOURCE 379

Bull - Born 3/25/23 Tag M016 Reg. #20908020

S A V RESOURCE 1441

MED ROCK RESOURCE 112

MED ROCK MARRI BART 646

B BAR BLACK MASS 4907

MED ROCK BLACK LUCI 016

MED ROCK COMRAD LUCI MLM 613

EPDS		
	SIRE	DAM
BW	+0.8	-0.3
WW	+63	+56
MILK	+20	+30
YW	+113	+98
DAM PDN		
BW	1/76	
WEAN	1/99	

CED EPD	WT	BIRTH EPD	WEANING EPD	YEARLING EPD	MILK EPD	\$M	\$W	SC CM
I+7	76	I+0.3	659	I+60	1123	I+106	I+25	80 52 34.0

MED ROCK **LOT 33**

MED ROCK MLM RESOURCE 382

Bull - Born 4/14/23 Tag M030 Reg. #20908023

S A V RESOURCE 1441

MED ROCK RESOURCE 112

MED ROCK MARRI BART 646

B BAR BLACK MASS 4907

MED ROCK BLACK ROSE MLM 030

MED ROCK MLM ROSE 239

EPDS		
	SIRE	DAM
BW	+0.8	+0.5
WW	+63	+57
MILK	+20	+31
YW	+113	+96
DAM PDN		
BW	1/82	
WEAN	1/103	

CED EPD	WT	BIRTH EPD	WEANING EPD	YEARLING EPD	MILK EPD	\$M	\$W	SC CM
I+6	82	I+0.7	683	I+60	1094	I+105	I+26	84 55 34.0

MED ROCK **LOT 31**

MED ROCK HULA SOURCE 303

Bull - Born 3/27/23 Tag 957 Reg. #20920845

S A V RESOURCE 1441

MED ROCK RESOURCE 112

MED ROCK MARRI BART 646

KPHU 4055

MED ROCK TONI HULA 957

MED ROCK TONI EL 661

EPDS		
	SIRE	DAM
BW	+0.8	+2.1
WW	+63	+47
MILK	+20	+27
YW	+113	+85
DAM PDN		
BW	1/86	
WEAN	1/96	

CED EPD	WT	BIRTH EPD	WEANING EPD	YEARLING EPD	MILK EPD	\$M	\$W	SC CM
	87		597	1059			45	34.0



Paul and Michelle Mehling.



MED ROCK **LOT 34** **330-B23**
 Bull - Born 3/22/23 Tag 047 Not Registered

S A V RESOURCE 1441
MED ROCK RESOURCE 112
 MED ROCK MARRI BART 646
 MCD UNO 808
MED ROCK ROCK'N UNO 047
 MED ROCK MISS CC 793

EPDS		SIRE	DAM
BW	+0.8		
WW	+63		
MILK	+20		
YW	+113		
DAM PDN			
BW			
WEAN			

CEP	BIRTH	WEANING	YEARLING	MILK	\$M	\$W	SC
EPD	WT	EPD	EPD	EPD			CM
	76	680	1093				36.0

MED ROCK **LOT 36** **MED ROCK BEAVER BOOK 300**
 Bull - Born 3/26/23 Tag M995 Reg. #20907965

BASIN PAYWEIGHT 1682
TEX PLAYBOOK 5437
 RITA 1C43 OF 9M26 COMPLETE
 MED ROCK BEAVER CREEK 628
MED ROCK BEAVER ROSE 995
 MED ROCK VIN ROSE 935

EPDS		SIRE	DAM
BW	-0.1	+0.3	
WW	+60	+43	
MILK	+36	+22	
YW	+104	+69	
DAM PDN			
BW		1/83	
WEAN		1/88	

CEP	BIRTH	WEANING	YEARLING	MILK	\$M	\$W	SC
EPD	WT	EPD	EPD	EPD			CM
	83	554	984			49	32.0

MED ROCK **LOT 35** **MED ROCK OLE BOOK 375**
 Bull - Born 3/19/23 Tag 6005 Reg. #20908018

BASIN PAYWEIGHT 1682
TEX PLAYBOOK 5437
 RITA 1C43 OF 9M26 COMPLETE
 LARSEN REALLY WINDY 14N
MED ROCK MISS OLE WIND 6005
 MED ROCK MISS MOLLY 448

EPDS		SIRE	DAM
BW	-0.1	+3.0	
WW	+60	+55	
MILK	+36	+28	
YW	+104	+101	
DAM PDN			
BW		4/82	
WEAN		4/104	

CEP	BIRTH	WEANING	YEARLING	MILK	\$M	\$W	SC			
EPD	WT	EPD	EPD	EPD			CM			
I+7	78	I+1.5	691	I+58	1098	I+102	I+32	92	59	36.0

MED ROCK **LOT 37** **MED ROCK PLAYBOOK 316**
 Bull - Born 3/17/23 Tag 368 Reg. #20907979

BASIN PAYWEIGHT 1682
TEX PLAYBOOK 5437
 RITA 1C43 OF 9M26 COMPLETE
 BOVAGENE SPRINT OF LCR
MED ROCK SAGE SPRINT 368
 MED ROCK SAGE 752

EPDS		SIRE	DAM
BW	-0.1	-2.2	
WW	+60	+38	
MILK	+36	+26	
YW	+104	+67	
DAM PDN			
BW		6/75	
WEAN		6/97	

CEP	BIRTH	WEANING	YEARLING	MILK	\$M	\$W	SC			
EPD	WT	EPD	EPD	EPD			CM			
I+13	75	I-1.2	640	I+49	976	I+85	I+31	94	55	35.5



Kellen McCalmont

MED ROCK **LOT 38** **MED ROCK REBOOK 355**
 Bull - Born 3/16/23 Tag 6023 Reg. #20908005

BASIN PAYWEIGHT 1682
TEX PLAYBOOK 5437
 RITA 1C43 OF 9M26 COMPLETE
 S A V RECHARGE 3436
MED ROCK BECKY CHARGE 6023
 MED ROCK BECKYMAN 128

EPDS		SIRE	DAM
BW	-0.1	+2.3	
WW	+60	+56	
MILK	+36	+21	
YW	+104	+97	
DAM PDN			
BW		5/86	
WEAN		5/100	

CEP	BIRTH	WEANING	YEARLING	MILK	\$M	\$W	SC			
EPD	WT	EPD	EPD	EPD			CM			
I+7	93	I+1.1	668	I+58	949	I+100	I+29	94	58	35.0



MED ROCK TEX UPWARD P365

Bull - Born 3/18/23 Tag P065 Reg. #20908012

BASIN PAYWEIGHT 1682
TEX PLAYBOOK 5437
RITA 1C43 OF 9M26 COMPLETE

SITZ UPWARD 307R
MED ROCK PAULA UPWARD 065
MED ROCK PAULA ALI PM 263

EPDS		
	SIRE	DAM
BW	-0.1	+1.6
WW	+60	+56
MILK	+36	+30
YW	+104	+107
DAM PDN		
BW	11/88	
WEAN	11/101	

CEP EPD	BIRTH WT	EPD	WEANING 205	EPD	YEARLING 365	EPD	MILK EPD	\$M	\$W	SC CM
I+9	75	I+0.8	599	I+58	1014	I+105	I+33	80	48	37.0



MED ROCK OLE BEAVER 333

Bull - Born 4/07/23 Tag 173 Reg. #20907988

S A V RECHARGE 3436
MED ROCK BEAVER CREEK 628
MED ROCK 707 616 071

BIG ROK OLE 450
MED ROCK OLENA 173
MED ROCK KORMA 702 796

EPDS		
	SIRE	DAM
BW	+0	+2.1
WW	+51	+50
MILK	+20	+89
YW	+90	+35
DAM PDN		
BW	9/86	
WEAN	9/104	

CEP EPD	BIRTH WT	EPD	WEANING 205	EPD	YEARLING 365	EPD	MILK EPD	\$M	\$W	SC CM
I+4	82	I+1.0	672	I+51	1076	I+90	I+28	57	47	37.0



MED ROCK PLAYBOOK PM 374

Bull - Born 3/19/23 Tag 608 Reg. #20908017

BASIN PAYWEIGHT 1682
TEX PLAYBOOK 5437
RITA 1C43 OF 9M26 COMPLETE

PA POWER TOOL 9108
MED ROCK POWER KIT PM 608
MED ROCK HOOVER KIT PM 156

EPDS		
	SIRE	DAM
BW	-0.1	+2.7
WW	+60	+58
MILK	+36	+30
YW	+104	+101
DAM PDN		
BW	4/84	
WEAN	4/102	

CEP EPD	BIRTH WT	EPD	WEANING 205	EPD	YEARLING 365	EPD	MILK EPD	\$M	\$W	SC CM
I+7	80	I+1.3	608	I+59	886	I+102	I+33	96	62	35.0



MED ROCK BEAVER RAIN 340

Bull - Born 4/11/23 Tag 919 Reg. #20907995

S A V RECHARGE 3436
MED ROCK BEAVER CREEK 628
MED ROCK 707 616 071

MED ROCK BEAVER CREEK 628
MED ROCK AMBER CREEK 919
MED ROCK AMBER TOOL 651

EPDS		
	SIRE	DAM
BW	+0	+0.9
WW	+51	+56
MILK	+20	+26
YW	+90	+107
DAM PDN		
BW	3/72	
WEAN	3/104	

CEP EPD	BIRTH WT	EPD	WEANING 205	EPD	YEARLING 365	EPD	MILK EPD	\$M	\$W	SC CM
I+7	60	I+0.4	634	I+54	986	I+99	I+23	60	49	35.0



MED ROCK WINDY BEAVER 321

Bull - Born 3/17/23 Tag 948 Reg. #20907981

S A V RECHARGE 3436
MED ROCK BEAVER CREEK 628
MED ROCK 707 616 071

S CHISUM 255
MED ROCK WINDY CHISM 948
MED ROCK AMERICAN WIND 3019

EPDS		
	SIRE	DAM
BW	+0	+1.3
WW	+51	+51
MILK	+20	+22
YW	+90	+85
DAM PDN		
BW	2/81	
WEAN	2/95	

CEP EPD	BIRTH WT	EPD	WEANING 205	EPD	YEARLING 365	EPD	MILK EPD	\$M	\$W	SC CM
I+6	78	I+0.6	614	I+51	938	I+88	I+22	66	44	35.0



MED ROCK BEAVER POWER 344

Bull - Born 4/06/23 Tag 594 Reg. #20907997

S A V RECHARGE 3436
MED ROCK BEAVER CREEK 628
MED ROCK 707 616 071

PA POWER TOOL 9108
MED ROCK ERICA POWER 594
MED ROCK ERICA SA 862

EPDS		
	SIRE	DAM
BW	+0	+3.1
WW	+51	+51
MILK	+20	+31
YW	+90	+88
DAM PDN		
BW	4/90	
WEAN	4/100	

CEP EPD	BIRTH WT	EPD	WEANING 205	EPD	YEARLING 365	EPD	MILK EPD	\$M	\$W	SC CM
I+3	102	I+1.5	633	I+51	1005	I+89	I+26	63	41	34.0



MED ROCK BEAVER SPRINT 329

Bull - Born 3/20/23 Tag 416 Reg. #20907985

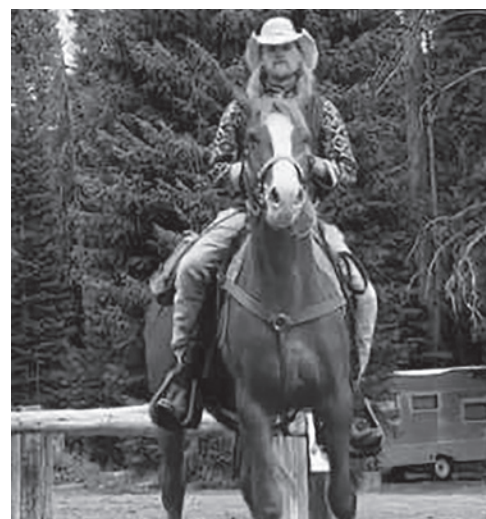
S A V RECHARGE 3436
MED ROCK BEAVER CREEK 628
MED ROCK 707 616 071

BOVAGENE SPRINT OF LCR
MED ROCK CRISTY SPRINT 416
MED ROCK FRONT CRISTY 169

EPDS		
	SIRE	DAM
BW	+0	+0.1
WW	+51	+46
MILK	+20	+24
YW	+90	+79
DAM PDN		
BW	6/83	
WEAN	6/97	

CEP EPD	BIRTH WT	EPD	WEANING 205	EPD	YEARLING 365	EPD	MILK EPD	\$M	\$W	SC CM
I+8	85	I+0.0	591	I+49	980	I+85	I+22	62	43	37.0

Levi Joyce





LOT 49
MED ROCK 49 **MED ROCK PCM AMBUSH 310**
 Bull - Born 3/23/23 Tag P884 Reg. #20907973

BANDOLIER ESTON DURNES 42B
PARAMONT AMBUSH 2172
 E W S MISS BURGESS 1720
 MED ROCK BEAVER CREEK 628
MED ROCK MONA BEAVER PM 884
 MED ROCK MONA PM 336

EPDS		
	SIRE	DAM
BW	+0.7	+1.3
WW	+26	+54
MILK	+23	+22
YW	+41	+94
DAM PDN		
BW	3/87	
WEAN	4/99	

CEP EPD	BIRTH WT	EPD	WEANING 205	EPD	YEARLING 365	EPD	MILK EPD	\$M	\$W	SC CM
I+1	92	I+1.0	606	I+40	968	I+68	I+23	64	38	36.5

LOT 46
MED ROCK 46 **MED ROCK BLACK BEAVER 356**
 Bull - Born 3/24/23 Tag 993 Reg. #20908006

S A V RECHARGE 3436
MED ROCK BEAVER CREEK 628
 MED ROCK 707 616 071
 B BAR BLACK MASS 4907
MED ROCK ULA JEWEL 993
 MED ROCK ULA 6014

EPDS		
	SIRE	DAM
BW	+0	-0.4
WW	+51	+62
MILK	+20	+31
YW	+90	+109
DAM PDN		
BW	1/78	
WEAN	1/95	

CEP EPD	BIRTH WT	EPD	WEANING 205	EPD	YEARLING 365	EPD	MILK EPD	\$M	\$W	SC CM
	78		630		1108				48	37.0

LOT 50
MED ROCK 50 **MED ROCK WINDY AMBUSH 338**
 Bull - Born 3/16/23 Tag 312 Reg. #20907993

BANDOLIER ESTON DURNES 42B
PARAMONT AMBUSH 2172
 E W S MISS BURGESS 1720
 H A R B WINDY 758 J H
MED ROCK WINDY SAGE 312
 MED ROCK SAGE PRIME 1012

EPDS		
	SIRE	DAM
BW	+0.7	+0.5
WW	+26	+45
MILK	+23	+30
YW	+41	+81
DAM PDN		
BW	7/85	
WEAN	7/104	

CEP EPD	BIRTH WT	EPD	WEANING 205	EPD	YEARLING 365	EPD	MILK EPD	\$M	\$W	SC CM
I+0	85	I+0.6	688	I+36	1053	I+61	I+27	62	42	36.0

LOT 47
MED ROCK 47 **MED ROCK BEAVER MAN 381**
 Bull - Born 5/03/23 Tag 128 Reg. #20908022

S A V RECHARGE 3436
MED ROCK BEAVER CREEK 628
 MED ROCK 707 616 071
 KESSLERS FRONTMAN R001
MED ROCK BECKYMAN 128
 MED ROCK BECKI SPIKE 603

EPDS		
	SIRE	DAM
BW	+0	+0.8
WW	+51	+42
MILK	+20	+28
YW	+90	+67
DAM PDN		
BW	8/82	
WEAN	9/100	

CEP EPD	BIRTH WT	EPD	WEANING 205	EPD	YEARLING 365	EPD	MILK EPD	\$M	\$W	SC CM
I+5	68	I+0.4	765	I+47	1184	I+79	I+24	74	54	31.0

LOT 51
MED ROCK 51 **MED ROCK BEAVER BUSH 357**
 Bull - Born 3/16/23 Tag 921 Reg. #20908007

BANDOLIER ESTON DURNES 42B
PARAMONT AMBUSH 2172
 E W S MISS BURGESS 1720
 MED ROCK BEAVER CREEK 628
MED ROCK ERICA BEAVER 921
 MED ROCK ERICA SURGE 642

EPDS		
	SIRE	DAM
BW	+0.7	+1.6
WW	+26	+59
MILK	+23	+24
YW	+41	+104
DAM PDN		
BW	2/76	
WEAN	1/101	

CEP EPD	BIRTH WT	EPD	WEANING 205	EPD	YEARLING 365	EPD	MILK EPD	\$M	\$W	SC CM
	75		655		1065				45	35.0

LOT 48
MED ROCK 48 **MED ROCK CASHIER CREEK 384**
 Bull - Born 4/13/23 Tag 808 Reg. #20908025

S A V RECHARGE 3436
MED ROCK BEAVER CREEK 628
 MED ROCK 707 616 071
 VAR CASH 547
MED ROCK ANNIE CASH 808
 MED ROCK PRIME ANNIE 177

EPDS		
	SIRE	DAM
BW	+0	+1.5
WW	+51	+58
MILK	+20	+97
YW	+90	+28
DAM PDN		
BW	4/79	
WEAN	4/99	

CEP EPD	BIRTH WT	EPD	WEANING 205	EPD	YEARLING 365	EPD	MILK EPD	\$M	\$W	SC CM
I+5	76	I+0.7	624	I+55	955	I+94	I+24	58	49	35.0

LOT 52
MED ROCK 52 **MED ROCK AMBUSH COWBOY 367**
 Bull - Born 3/28/23 Tag 765 Reg. #20908014

BANDOLIER ESTON DURNES 42B
PARAMONT AMBUSH 2172
 E W S MISS BURGESS 1720
 HA COWBOY UP 5405
MED ROCK COWGIRL CAT 765
 MED ROCK TOPPER CAT 385

EPDS		
	SIRE	DAM
BW	+0.7	+0.9
WW	+26	+58
MILK	+23	+22
YW	+41	+106
DAM PDN		
BW	2/73	
WEAN	2/100	

CEP EPD	BIRTH WT	EPD	WEANING 205	EPD	YEARLING 365	EPD	MILK EPD	\$M	\$W	SC CM
I+4	78	I+0.8	651	I+42	1056	I+74	I+23	68	46	38.0



MED ROCK HULA CHISUM 335

Bull - Born 3/23/23 Tag 956 Reg. #20907990

MUSGRAVE BOULDER
KPHU 4055

KPHU 1056

S CHISUM 255

MED ROCK CHISUM CLARICE 956

MED ROCK ADA POWER 478

EPDS		
	SIRE	DAM
BW	+1.1	+0.5
WW	+59	+52
MILK	+25	+26
YW	+103	+85
DAM PDN		
BW	1/90	
WEAN	1/103	

CED EPD	BIRTH WT	EPD	WEANING 205 EPD	YEARLING 365 EPD	MILK EPD	\$M	\$W	SC CM
	90		707	1175			48	38.0



MED ROCK HULA SPRINT 315

Bull - Born 3/25/23 Tag 274 Reg. #20907978

MUSGRAVE BOULDER
KPHU 4055

KPHU 1056

BOVAGENE SPRINT OF LCR

MED ROCK SASSY SPRINT 274

MED ROCK SASSY CEDAR 090

EPDS		
	SIRE	DAM
BW	+1.1	+0.7
WW	+59	+50
MILK	+25	+19
YW	+103	+89
DAM PDN		
BW	7/80	
WEAN	7/95	

CED EPD	BIRTH WT	EPD	WEANING 205 EPD	YEARLING 365 EPD	MILK EPD	\$M	\$W	SC CM
I+8	85	I+0.9	656	I+55	1024	I+96	I+22	62 50 36.0



MED ROCK HULA RAIN 304

Bull - Born 3/25/23 Tag 910 Reg. #20907968

MUSGRAVE BOULDER
KPHU 4055

KPHU 1056

S A V RAINFALL 6846

MED ROCK CLARICE RAIN 910

MED ROCK CLARICE 069

EPDS		
	SIRE	DAM
BW	+1.1	-0.8
WW	+59	+44
MILK	+25	+23
YW	+103	+82
DAM PDN		
BW	1/85	
WEAN	1/98	

CED EPD	BIRTH WT	EPD	WEANING 205 EPD	YEARLING 365 EPD	MILK EPD	\$M	\$W	SC CM
	85		660	1083			46	34.0



MED ROCK HULA COMMAND 332

Bull - Born 3/13/23 Tag 712 Reg. #20907987

MUSGRAVE BOULDER
KPHU 4055

KPHU 1056

EF COMMANDO 1366

MED ROCK LUCI COMMAND 712

MED ROCK COMRADE LUCY 576

EPDS		
	SIRE	DAM
BW	+1.1	+0.6
WW	+59	+51
MILK	+25	+24
YW	+103	+92
DAM PDN		
BW	2/81	
WEAN	2/96	

CED EPD	BIRTH WT	EPD	WEANING 205 EPD	YEARLING 365 EPD	MILK EPD	\$M	\$W	SC CM
I+10	80	I+0.3	625	I+55	983	I+98	I+25	69 49 35.0



MED ROCK HULA CASH MLM 309

Bull - Born 3/28/23 Tag M804 Reg. #20907972

MUSGRAVE BOULDER
KPHU 4055

KPHU 1056

VAR CASH 547

MED ROCK ROSIE CASH MLM 804

MED ROCK MLM ROSE 239

EPDS		
	SIRE	DAM
BW	+1.1	+0.5
WW	+59	+56
MILK	+25	+33
YW	+103	+96
DAM PDN		
BW	3/84	
WEAN	3/106	

CED EPD	BIRTH WT	EPD	WEANING 205 EPD	YEARLING 365 EPD	MILK EPD	\$M	\$W	SC CM
I+7	91	I+0.8	624	I+58	1222	I+100	I+30	65 49 33.0



MED ROCK HULA MAN 336

Bull - Born 3/23/23 Tag 407 Reg. #20907991

MUSGRAVE BOULDER
KPHU 4055

KPHU 1056

BOVAGENE SPRINT OF LCR

MED ROCK ULA 407

MED ROCK ULA CONVERTER 117

EPDS		
	SIRE	DAM
BW	+1.1	-0.4
WW	+59	+60
MILK	+25	+28
YW	+103	+104
DAM PDN		
BW	4/77	
WEAN	4/103	

CED EPD	BIRTH WT	EPD	WEANING 205 EPD	YEARLING 365 EPD	MILK EPD	\$M	\$W	SC CM
I+9	78	I+0.4	645	I+60	1050	I+104	I+27	62 60 35.5



MED ROCK HULA POWER 313

Bull - Born 3/23/23 Tag 775 Reg. #20907975

MUSGRAVE BOULDER
KPHU 4055

KPHU 1056

PA POWER TOOL 9108

MED ROCK BECKI POWER 775

MED ROCK BECKYMAN 128

EPDS		
	SIRE	DAM
BW	+1.1	+1.0
WW	+59	+44
MILK	+25	+30
YW	+103	+79
DAM PDN		
BW	2/81	
WEAN	2/97	

CED EPD	BIRTH WT	EPD	WEANING 205 EPD	YEARLING 365 EPD	MILK EPD	\$M	\$W	SC CM
I+8	85	I+1.1	667	I+52	1038	I+91	I+28	72 51 35.0



MED ROCK HULA SPRINT 349

Bull - Born 3/19/23 Tag 5006 Reg. #20908001

MUSGRAVE BOULDER
KPHU 4055

KPHU 1056

BOVAGENE SPRINT OF LCR

MED ROCK BECKI SPRINT 5006

MED ROCK BECKYMAN 125

EPDS		
	SIRE	DAM
BW	+1.1	+0.3
WW	+59	+49
MILK	+25	+27
YW	+103	+85
DAM PDN		
BW	4/79	
WEAN	4/100	

CED EPD	BIRTH WT	EPD	WEANING 205 EPD	YEARLING 365 EPD	MILK EPD	\$M	\$W	SC CM
I+8	82	I+0.7	597	I+54	1025	I+94	I+26	62 48 35.0



MED ROCK HULA POWER 359

Bull - Born 3/20/23 Tag 602 Reg. #20908008

MUSGRAVE BOULDER
KPHU 4055

KPHU 1056

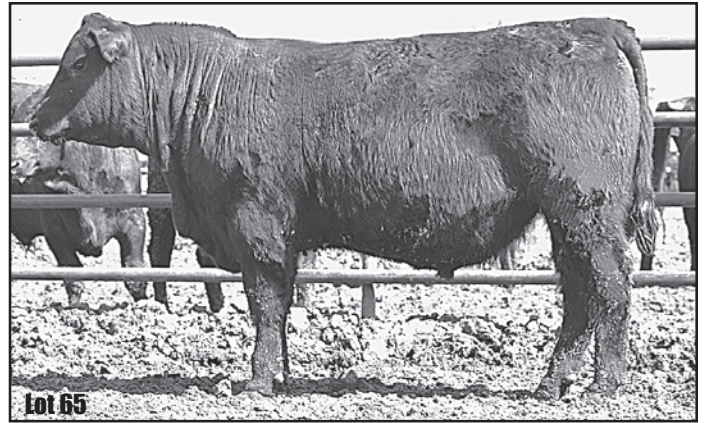
CONNELLY POWER SURGE 3115

MED ROCK PEGGY POWER 602

MED ROCK PEGGY IMAGE 9002

EPDS		
	SIRE	DAM
BW	+1.1	+2.8
WW	+59	+53
MILK	+25	+25
YW	+103	+90
DAM PDN		
BW	4/77	
WEAN	4/95	

CEP EPD	BIRTH WT	EPD	WEANING 205	EPD	YEARLING 365	EPD	MILK EPD	\$M	\$W	SC CM
I+7	87	I+2.0	647	I+56	1042	I+97	I+25	64	52	33.0



MED ROCK HULA BULL 369

Bull - Born 3/23/23 Tag 923 Not Registered

MUSGRAVE BOULDER
KPHU 4055

KPHU 1056

MAR INNOVATION 251

MED ROCK MISS INO 923

MED ROCK MISS SPRINT 2017

EPDS		
	SIRE	DAM
BW	+1.1	
WW	+59	
MILK	+25	
YW	+103	
DAM PDN		
BW		
WEAN		

CEP EPD	BIRTH WT	EPD	WEANING 205	EPD	YEARLING 365	EPD	MILK EPD	\$M	\$W	SC CM
	80		609		973					33.0



MED ROCK PAYLOAD 308

Bull - Born 4/10/23 Tag 8000 Reg. #20907971

BASIN PAYWEIGHT 1682
SSR PAYWEIGHT 704E

SSR EVANGELINE 478B

SITZ RELOAD 411C

MED ROCK SASSY LOAD 8000

MED ROK SASSY JUNO 325

EPDS		
	SIRE	DAM
BW	+1.7	+0.4
WW	+62	+53
MILK	+26	+28
YW	+120	+98
DAM PDN		
BW	2/77	
WEAN	2/100	

CEP EPD	BIRTH WT	EPD	WEANING 205	EPD	YEARLING 365	EPD	MILK EPD	\$M	\$W	SC CM
I+5	82	I+0.7	649	I+58	1048	I+109	I+28	84	52	34.0



SPRING PROFICIENT 323

Bull - Born 3/27/23 Tag S323 Reg. #20908562

KPHU 4055
MED ROCK PROFICIENT HULA 024

MED ROCK ROK'N SASSY 291

MED ROCK EMBLAZON CC MLM 778

SPRING DUTCHESS BLAZE 910

RTS DUTCHESS 517-DV

EPDS		
	SIRE	DAM
BW	-0.1	+2.2
WW	+51	+53
MILK	+30	+27
YW	+89	+90
DAM PDN		
BW	3/80	
WEAN	3/99	

CEP EPD	BIRTH WT	EPD	WEANING 205	EPD	YEARLING 365	EPD	MILK EPD	\$M	\$W	SC CM
+6	76	+2	556	+49	921	+85	+28	84	50	30.2

Recommend for heifers.



MED ROCK POWER WEIGHT 312

Bull - Born 4/06/23 Tag 488 Reg. #20907974

BASIN PAYWEIGHT 1682
SSR PAYWEIGHT 704E

SSR EVANGELINE 478B

PA POWER TOOL 9108

MED ROCK GOLD POWER 488

MED ROCK GOLD CINCH 660

EPDS		
	SIRE	DAM
BW	+1.7	+1.2
WW	+62	+49
MILK	+26	+33
YW	+120	+90
DAM PDN		
BW	4/79	
WEAN	4/103	

CEP EPD	BIRTH WT	EPD	WEANING 205	EPD	YEARLING 365	EPD	MILK EPD	\$M	\$W	SC CM
I+6	87	I+1.5	694	I+56	1032	I+105	I+30	85	52	34.0



MED ROCK ROCK'N WEIGHT 301

Bull - Born 3/16/23 Tag 742 Reg. #20907966

BASIN PAYWEIGHT 1682
SSR PAYWEIGHT 704E

SSR EVANGELINE 478B

MED ROCK ROCK'N CC 552

MED ROCK BEAUTY CC 742

MED ROCK BEAUTY POWER 519

EPDS		
	SIRE	DAM
BW	+1.7	+0.1
WW	+62	+56
MILK	+26	+28
YW	+120	+104
DAM PDN		
BW	4/79	
WEAN	4/99	

CEP EPD	BIRTH WT	EPD	WEANING 205	EPD	YEARLING 365	EPD	MILK EPD	\$M	\$W	SC CM
I+6	82	I+0.9	636	I+59	1020	I+112	I+28	77	51	37.0



MED ROCK PAYWEIGHT 339

Bull - Born 4/25/23 Tag 975 Reg. #20907994

BASIN PAYWEIGHT 1682
SSR PAYWEIGHT 704E

SSR EVANGELINE 478B

VAR COMMOTION 650

MED ROCK ANNIE COMMOTION 975

MED ROCK ANNIE SPRINT 1021

EPDS		
	SIRE	DAM
BW	+1.7	+2.6
WW	+62	+60
MILK	+26	+27
YW	+120	+109
DAM PDN		
BW	1/98	
WEAN	1/97	

CEP EPD	BIRTH WT	EPD	WEANING 205	EPD	YEARLING 365	EPD	MILK EPD	\$M	\$W	SC CM
	98		659		1088				42	36.0



MED ROCK LOT 71 **MED ROCK DIESEL TOOL 358**
 Bull - Born 3/16/23 Tag 6021 Reg. #20922333

DL DIESEL
BS BIG DIESEL S861
 TOUR WITH SINKS ANGUS S116

PA POWER TOOL 9108
MED ROCK SASSY TOOL 6021
 MED ROCK SASSY UPWARD 034

EPDS		
	SIRE	DAM
BW	+2.2	+3.9
WW	+70	+53
MILK	+22	+32
YW	+124	+109
DAM PDN		
BW	4/50	
WEAN	4/101	

CEP	BIRTH	WEANING	YEARLING	MILK	\$M	\$W	SC			
EPD	WT	205	365	EPD	EPD	EPD	CM			
I+3	78	I+3.1	550	I+62	981	I+112	I+27	64	47	36.0

MED ROCK LOT 68 **MED ROCK PAYWEIGHT BOY 350**
 Bull - Born 3/25/23 Tag 728 Reg. #20908002

BASIN PAYWEIGHT 1682
SSR PAYWEIGHT 704E
 SSR EVANGELINE 478B

VAR DAKOTA BOY 92
MED ROCK JESSIE DAKOTA 728
 MED ROCK BLACK JESSIE 452

EPDS		
	SIRE	DAM
BW	+1.7	+2.2
WW	+62	+60
MILK	+26	+25
YW	+120	+110
DAM PDN		
BW	3/81	
WEAN	3/106	

CEP	BIRTH	WEANING	YEARLING	MILK	\$M	\$W	SC			
EPD	WT	205	365	EPD	EPD	EPD	CM			
I+3	85	I+2.0	692	I+61	1084	I+115	I+26	78	50	38.5

MED ROCK LOT 72 **MED ROCK DIESEL CONTRAST 366**
 Bull - Born 4/05/23 Tag 828 Reg. #20908013

DL DIESEL
BS BIG DIESEL S861
 TOUR WITH SINKS ANGUS S116

BIG ROK OLE 450
MED ROCK CEDAR CONTRAST 828
 MED ROCK MRC CCBC 369

EPDS		
	SIRE	DAM
BW	+2.2	+1.5
WW	+70	+52
MILK	+22	+23
YW	+124	+90
DAM PDN		
BW	2/79	
WEAN	2/96	

CEP	BIRTH	WEANING	YEARLING	MILK	\$M	\$W	SC			
EPD	WT	205	365	EPD	EPD	EPD	CM			
I+4	84	I+1.7	664	I+59	1012	I+106	I+26	65	46	41.0

MED ROCK LOT 69 **MED ROCK UNO PAYWEIGHT 364**
 Bull - Born 3/15/23 Tag 028 Reg. #20908011

BASIN PAYWEIGHT 1682
SSR PAYWEIGHT 704E
 SSR EVANGELINE 478B

MCD UNO 728
MED ROCK LUCY UNO MLM 028
 MED ROCK BLACK LUCY MLM 064

EPDS		
	SIRE	DAM
BW	+1.7	+4.1
WW	+62	+79
MILK	+26	+31
YW	+120	+124
DAM PDN		
BW	2/70	
WEAN	1/99	

CEP	BIRTH	WEANING	YEARLING	MILK	\$M	\$W	SC			
EPD	WT	205	365	EPD	EPD	EPD	CM			
I+2	85	I+2.9	632	I+63	1108	I+113	I+26	82	45	35.0

MED ROCK LOT 73 **MED ROCK DIESEL DRIVER 322**
 Bull - Born 3/15/23 Tag 930 Reg. #20920778

DL DIESEL
BS BIG DIESEL S861
 TOUR WITH SINKS ANGUS S116

VAR COMMOTION 650
MED ROCK MISS MIDAS 930
 MED ROCK OLE MIDAS 428

EPDS		
	SIRE	DAM
BW	+2.2	+2.6
WW	+70	+52
MILK	+22	+27
YW	+124	+93
DAM PDN		
BW	1/72	
WEAN	1/97	

CEP	BIRTH	WEANING	YEARLING	MILK	\$M	\$W	SC			
EPD	WT	205	365	EPD	EPD	EPD	CM			
	72		622		910				54	33.0

MED ROCK LOT 70 **MED ROCK PRIME WEIGHT 383**
 Bull - Born 3/12/23 Tag 1012 Reg. #20908024

BASIN PAYWEIGHT 1682
SSR PAYWEIGHT 704E
 SSR EVANGELINE 478B

HIGH PRIME 4037
MED ROCK SAGE PRIME 1012
 MED ROCK SAGE BB 456

EPDS		
	SIRE	DAM
BW	+1.7	-1.5
WW	+62	+46
MILK	+26	+27
YW	+120	+74
DAM PDN		
BW	9/76	
WEAN	9/98	

CEP	BIRTH	WEANING	YEARLING	MILK	\$M	\$W	SC			
EPD	WT	205	365	EPD	EPD	EPD	CM			
I+7	86	I+0.1	597	I+54	957	I+97	I+27	70	50	36.0

MED ROCK LOT 74 **MED ROCK DIESEL TRUCK 326**
 Bull - Born 4/08/23 Tag 920 Reg. #20907984

DL DIESEL
BS BIG DIESEL S861
 TOUR WITH SINKS ANGUS S116

KPHU 4055
MED ROCK BESSIE HULA 920
 MED ROCK LO BESS 956

EPDS		
	SIRE	DAM
BW	+2.2	+1.7
WW	+70	+50
MILK	+22	+26
YW	+124	+86
DAM PDN		
BW	1/94	
WEAN	1/103	

CEP	BIRTH	WEANING	YEARLING	MILK	\$M	\$W	SC			
EPD	WT	205	365	EPD	EPD	EPD	CM			
	94		669		1068				48	36.0



MED ROCK DIESEL POWER 328
Bull - Born 4/05/23 Tag 427 Reg. #20925438

DL DIESEL
BS BIG DIESEL S861
TOUR WITH SINKS ANGUS S116

PA POWER TOOL 9108
MED ROCK BANIGAN POWER 427
MED ROCK 702 BANIGAN 729

EPDS		
	SIRE	DAM
BW	+2.2	+0.9
WW	+70	+37
MILK	+22	+21
YW	+124	+63
DAM PDN		
BW	3/86	
WEAN	3/100	

CED EPD	BIRTH WT	EPD	WEANING 205 EPD	YEARLING 365 EPD	MILK EPD	\$M	\$W	SC CM	
I+3	85	I+2.3	I+61	960	I+109	I+26	63	46	34.0



MED ROCK HULA DIESEL 363
Bull - Born 4/19/23 Tag 955 Reg. #20908010

DL DIESEL
BS BIG DIESEL S861
TOUR WITH SINKS ANGUS S116

KPHU 4055
MED ROCK HULA CLARICE 955
MED ROCK CON CLARICE 365

EPDS		
	SIRE	DAM
BW	+2.2	+1.0
WW	+70	+55
MILK	+22	+25
YW	+124	+98
DAM PDN		
BW	1/77	
WEAN	1/101	

CED EPD	BIRTH WT	EPD	WEANING 205 EPD	YEARLING 365 EPD	MILK EPD	\$M	\$W	SC CM
	77		632	1005				35.0



MED ROCK HULA DIESEL 331
Bull - Born 4/21/23 Tag 801 Reg. #20907986

DL DIESEL
BS BIG DIESEL S861
TOUR WITH SINKS ANGUS S116

KPHU 4055
MED ROCK HULA LUCI 801
MED ROCK LUCI SPRINT 573

EPDS		
	SIRE	DAM
BW	+2.2	+1.7
WW	+70	+59
MILK	+22	+27
YW	+124	+105
DAM PDN		
BW	2/87	
WEAN	2/108	

CED EPD	BIRTH WT	EPD	WEANING 205 EPD	YEARLING 365 EPD	MILK EPD	\$M	\$W	SC CM		
I+5	96	I+2.0	719	I+65	1015	I+115	I+25	64	51	36.0



MED ROCK FRONT EFFECTIVE 342
Bull - Born 3/22/23 Tag 169 Reg. #20920847

A A R FRONTMAN 3132
LEES FRONTMAN 1168
ALICIA 6198 LAR

SCHIEFELBEIN EFFECTIVE 61
MED ROCK MLM EFFECTIVE 169
MED ROCK LUCI SPRINT MLM 252

EPDS		
	SIRE	DAM
BW	-0.9	+0.1
WW	+64	+51
MILK	+37	+27
YW	+115	+93
DAM PDN		
BW	1/85	
WEAN	1/98	

CED EPD	BIRTH WT	EPD	WEANING 205 EPD	YEARLING 365 EPD	MILK EPD	\$M	\$W	SC CM	
	85		610	1088				54	34.0



MED ROCK DIESEL FUEL 348
Bull - Born 4/17/23 Tag 714 Reg. #20908000

DL DIESEL
BS BIG DIESEL S861
TOUR WITH SINKS ANGUS S116

CONNEALY COMRADE 1385
MED ROCK COMRADE LUCY 714
MED ROCK SASSY CCBC 132

EPDS		
	SIRE	DAM
BW	+2.2	-1.2
WW	+70	+40
MILK	+22	+24
YW	+124	+78
DAM PDN		
BW	2/84	
WEAN	2/97	

CED EPD	BIRTH WT	EPD	WEANING 205 EPD	YEARLING 365 EPD	MILK EPD	\$M	\$W	SC CM		
I+8	106	I+0.5	690	I+55	1127	I+102	I+23	74	40	38.0



MED ROCK RESILIENT MAN 343
Bull - Born 3/20/23 Tag 146 Reg. #20923663

A A R FRONTMAN 3132
LEES FRONTMAN 1168
ALICIA 6198 LAR

SITZ RESILIENT 10208
MED ROCK RESILIENT WT 146
MED ROCK LASSIE WEIGHT 5016

EPDS		
	SIRE	DAM
BW	-0.9	-1.2
WW	+64	+43
MILK	+37	+28
YW	+115	+81
DAM PDN		
BW	1/75	
WEAN	1/96	

CED EPD	BIRTH WT	EPD	WEANING 205 EPD	YEARLING 365 EPD	MILK EPD	\$M	\$W	SC CM	
	75		602	1042				57	36.0



MED ROCK COMRADE DIESEL 361
Bull - Born 5/10/23 Tag 576 Reg. #20908009

DL DIESEL
BS BIG DIESEL S861
TOUR WITH SINKS ANGUS S116

CONNEALY COMRADE 1385
MED ROCK COMRADE LUCY 576
MED ROCK LUCI FACTOR 072

EPDS		
	SIRE	DAM
BW	+2.2	+1.1
WW	+70	+51
MILK	+22	+26
YW	+124	+96
DAM PDN		
BW	4/72	
WEAN	4/100	

CED EPD	BIRTH WT	EPD	WEANING 205 EPD	YEARLING 365 EPD	MILK EPD	\$M	\$W	SC CM	
I+6	84	I+1.7	704	I+61	I+111	I+24	74	52	34.0



MED ROCK FRONT CREEK 351
Bull - Born 3/24/23 Tag 140 Commercial

A A R FRONTMAN 3132
LEES FRONTMAN 1168
ALICIA 6198 LAR

MED ROCK BEAVER CREEK 628
MED ROCK ANNIE CREEK 140
MED ROCK ANNIE LOAD 897

EPDS		
	SIRE	DAM
BW	-0.9	
WW	+64	
MILK	+37	
YW	+115	
DAM PDN		
BW		
WEAN		

CED EPD	BIRTH WT	EPD	WEANING 205 EPD	YEARLING 365 EPD	MILK EPD	\$M	\$W	SC CM
	70							31.0



MED ROCK SPRINTMAN 362

Bull - Born 3/17/23 Tag 159 Reg. #20922646

A A R FRONTMAN 3132
LEES FRONTMAN 1168
ALICIA 6198 LAR

S A V RESOURCE 1441
MED ROCK RESOURCE SPRINT 159
MED ROCK ULA 407

EPDS		
	SIRE	DAM
BW	-0.9	-0.4
WW	+64	+60
MILK	+37	+28
YW	+115	+104
DAM PDN		
BW	1/77	
WEAN	1/106	

CED EPD	BIRTH WT	EPD	WEANING 205	EPD	YEARLING 365	EPD	MILK EPD	\$M	\$W	SC CM
	77		638		1010				63	35.0



MED ROCK BLUE FRONT 378

Bull - Born 3/14/23 Tag 137 Reg. #20927911

A A R FRONTMAN 3132
LEES FRONTMAN 1168
ALICIA 6198 LAR

WOODHILL BLUEPRINT
MED ROCK BLUE CHARGE 137
MED ROCK MISS CHARGE MLM 752

EPDS		
	SIRE	DAM
BW	-0.9	+0.3
WW	+64	+43
MILK	+37	+69
YW	+115	+22
DAM PDN		
BW	1/88	
WEAN	1/108	

CED EPD	BIRTH WT	EPD	WEANING 205	EPD	YEARLING 365	EPD	MILK EPD	\$M	\$W	SC CM
	88		656		1140				57	34.0



MED ROCK FRONT ENGAGE 370

Bull - Born 3/11/23 Tag 164 Reg. #20920849

A A R FRONTMAN 3132
LEES FRONTMAN 1168
ALICIA 6198 LAR

COLEMAN ENGAGE 5255
MED ROCK OLENA ENGAGE 164
MED ROCK OLENA 173

EPDS		
	SIRE	DAM
BW	-0.9	+1.2
WW	+64	+56
MILK	+37	+32
YW	+115	+98
DAM PDN		
BW	2/79	
WEAN	1/105	

CED EPD	BIRTH WT	EPD	WEANING 205	EPD	YEARLING 365	EPD	MILK EPD	\$M	\$W	SC CM
	77		656		1010				61	36.0



MED ROCK HULA 808 311

Bull - Born 3/21/23 Tag 117 Commercial

C C A UNO 049
MCD UNO 808
MCD-1 POWERESS 329

KPHU 4055
MED ROCK MISS HULA 117
MED ROCK TOPPER CAT 385

EPDS		
	SIRE	DAM
BW	+0.9	+0.4
WW	+56	+51
MILK	+34	+27
YW	+93	+91
DAM PDN		
BW		
WEAN		

CED EPD	BIRTH WT	EPD	WEANING 205	EPD	YEARLING 365	EPD	MILK EPD	\$M	\$W	SC CM
	68				1010					34.0



MED ROCK PAYMAN 372

Bull - Born 3/07/23 Tag 158 Reg. #20920850

A A R FRONTMAN 3132
LEES FRONTMAN 1168
ALICIA 6198 LAR

SSR PAYWEIGHT 704E
MED ROCK MISS PAYWEIGHT 158
MED ROCK MAGGIE COMRADE 674

EPDS		
	SIRE	DAM
BW	-0.9	+1.7
WW	+64	+58
MILK	+37	+27
YW	+115	+109
DAM PDN		
BW	1/83	
WEAN	1/95	

CED EPD	BIRTH WT	EPD	WEANING 205	EPD	YEARLING 365	EPD	MILK EPD	\$M	\$W	SC CM
	83		590		1024				54	34.0



MED ROCK LINEBRED 318

Bull - Born 3/27/23 Tag 174 Reg. #20927909

C C A UNO 049
MCD UNO 808
MCD-1 POWERESS 329

MCD UNO 808
MED ROCK BLACK UNO MLM 174
MED ROCK BLACK ROSE MLM 997

EPDS		
	SIRE	DAM
BW	+0.9	-0.1
WW	+56	+57
MILK	+34	+28
YW	+93	+100
DAM PDN		
BW	1/65	
WEAN	1/105	

CED EPD	BIRTH WT	EPD	WEANING 205	EPD	YEARLING 365	EPD	MILK EPD	\$M	\$W	SC CM
	65								63	34.0



MED ROCK GOLD FRONT 377

Bull - Born 3/19/23 Tag 127 Reg. #20927910

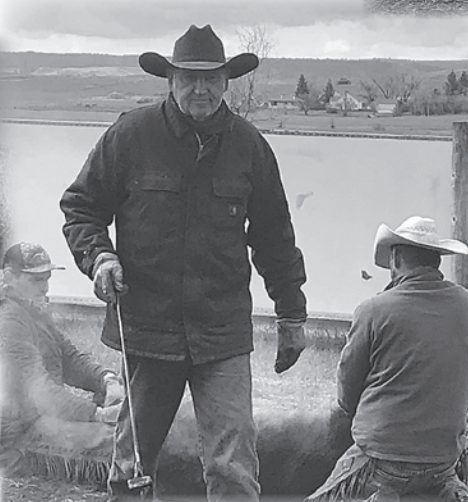
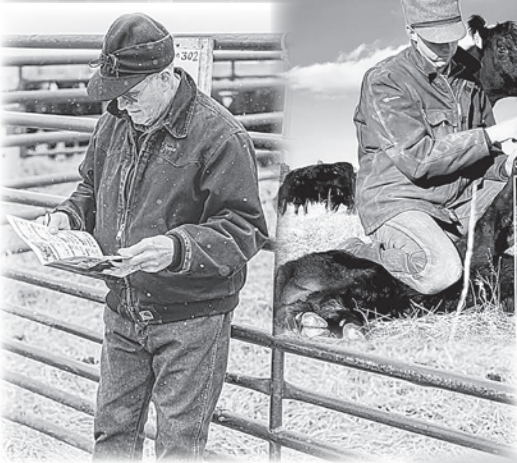
A A R FRONTMAN 3132
LEES FRONTMAN 1168
ALICIA 6198 LAR

SITZ RESILIENT 10208
MED ROCK GOLD RESILIENT 127
MED ROCK GOLD SPRINT 3015

EPDS		
	SIRE	DAM
BW	-0.9	+1.3
WW	+64	+52
MILK	+37	+24
YW	+115	+95
DAM PDN		
BW	1/73	
WEAN	1/104	

CED EPD	BIRTH WT	EPD	WEANING 205	EPD	YEARLING 365	EPD	MILK EPD	\$M	\$W	SC CM
	73		624		1010				61	34.0





Oakley Spring recipient of Foundation Female Program



Dakota Community Bank & Trust recently announced Oakley and empower them to build their own herds. Oakley's dedication

Medicine Rocks Angus
1021 Hwy 7
Baker MT 59313

FIRST CLASS MAIL
U.S. POSTAGE
PAID
Permit No. 222
BISMARCK, ND
58501



Happy Trails to all who came and for everyones support. We appreciate you all.



Kphu 4055



Med Rock Beaver Creek 628



B Bar Blackmass 3045 Sire of 4907


Ekalaka Montana
MEDICINE ROCKS
ANGUS RANCH
Frank and Charlene Mehling
406-775-6478 • 1021 Hwy 7 Baker MT, 59313


SPRING
ANGUS
Kelly and Torey Spring • 406-740-0523
70 Chalk Buttes, Ekalaka MT, 59324

OVER 50 YEARS IN THE ANGUS BUSINESS

Check us out online at MedicineRocksRanch.com or find us on Facebook or Instagram  